



Dual Action Windows

ALUMINIUM CATALOGUE



ALUPROF SYSTEMS



MB-45	8
MB-60	10
MB-79N	12
MB-79N CASEMENT	14
MB-86N	16
MB-104 PASSIVE	20
MB-FERROLINE	22
MB-SLIDE	24
MB-59 HS	26
MB-77 HS	28
MB-86 FOLD LINE	30
MB-60E EI	32
MB-78 EI	34



MB-45

WINDOW AND DOOR SYSTEMS



TECHNICAL DATA	MB-45
Frame depth (door window)	1 3/4"
Leaf depth (door window)	1 3/4" 2 1/8"
Glazing thickness (permanent window and door active window)	1/16" - 63/64" 1/16" - 1 5/16"
MIN. VISIBLE PROFILE WIDTH	
Frame (door window)	2 5/8" 1 11/16"
Leaf (door window)	2 13/16" 1 1/16"
MAX STRUCTURE DIMENSIONS AND WEIGHT	
Max. dimensions of tilt-and-turn window	H to 7' 10" (6' 8") L to 4' 1" (5' 3")
Max. dimensions of door leaf	H to 7' 10" (7' 2") L to 4' 1" (4' 7")
Max. weight of the leaf (door window)	264 286 lbs



MB-45

The MB-45 system seamlessly integrates with office buildings, offering a sleek, modern design through its raw aluminium finish and expansive glazing area. Its structural depth enhances functionality—providing a unified exterior plane for windows and a flush surface between door leaves and frames.

Primarily used for fabricating windows, ticket booths, vestibules, display cases, doors, and partitions, the MB-45 system is ideal for internal structures due to its lack of a thermal break. While it may not excel in thermal insulation, it offers extensive construction possibilities. The system supports the creation of windows up to 7' 10" in height and 4' 1" inches in width. Remarkably, the MB-45 system facilitates the construction of complex designs, including swing doors and arched windows with fixed glazing.

MB-60

WINDOW AND DOOR SYSTEMS



TECHNICAL DATA	MB-60 / HI	MB-60US / HI	MB-60 PIVOT
Frame depth (door window)	2 3/8"		
Leaf depth (door window)	2 3/8" 2 11/16"	2 11/16"	
Glazing thickness (permanent window and door / active window)	3/16" - 1 5/8" 9/16" - 1 15/16"	3/16" - 1 3/8" 5/16" - 1 3/4"	3/16" - 1 5/8" 9/16" - 1 15/16"
MIN. VISIBLE PROFILE WIDTH			
Frame (door window)	2 1/64" 1 7/8"	2 15/16"	1 7/8"
Leaf (door window)	2 13/16" 1 1/8"	1 3/8"	3"
MAX STRUCTURE DIMENSIONS AND WEIGHT			
Max. dimensions of tilt-and-turn window	H to 7' 10" L to 4' 2"	H to 6' 2" L to 3' 7"	H to 6' 7" L to 7' 10"
Max. dimensions of door leaf	H to 7' 10" L to 3' 11"	-	-
Max. weight of the leaf (door window)	264 lbs / 286 lbs	286 lbs	396 lbs



MB-60

The MB-60 system offers versatile window and door solutions, including tilt, turn, tilt-and-turn, and tilt-and-slide options. Four distinct variations have been developed within this system to expand its application range. The MB-60 HI is the inaugural variant, offering enhanced thermal insulation. This feature is suitable for both individual buildings and aluminium façades, achieved by inserting special insulators in the central chambers to minimize heat transfer through the structure.

Another integral part of the MB-60 system with a thermal break is the MB-60 Concealed Sash. This design renders the window leaves invisible from a building's exterior, making it challenging to differentiate between fixed and opening windows side by side. A particularly innovative option within the MB-60 range is the MB-60 PIVOT, which allows for the construction of revolving windows.

Alternative variants of MB-60 window profiles



MB-60 US



MB-60 PIVOT

MB-79N

WINDOW AND DOOR SYSTEMS



MB-79N

The MB 79N system, known for its economical efficiency, meets advanced thermal and acoustic insulation standards. It is the advanced successor to the highly regarded and widely utilized MB-70 system in the construction industry. Thanks to its high strength and durability, the MB 79N offers a plethora of construction possibilities.

This system is versatile, used for a variety of joinery products including fixed windows, casements, tilt and tilt-and-slide windows, single- and double-leaf external doors, and storefront solutions incorporating doors.

The MB 79N system is available in several variants:

- The MB-79N E, an economical option featuring a single-component central gasket in the windows.
- The MB-79N ST version, which includes a two-component central gasket.
- The MB-79N SI variant, offering the highest level of thermal insulation, with profiles that include insulating inserts and a two-component central gasket.

MB-79N

Alternative variants of MB-79N window profiles



MB-79N SI



MB-79N E

TECHNICAL DATA	MB-79N ST / MB-79N SI
Frame depth	2 3/4"
Leaf depth	3 1/8"
Glazing thickness	1/16" - 2 1/2"
MIN. VISIBLE PROFILE WIDTH	
Frame	2"
Leaf	from 1 5/16"
MAX STRUCTURE DIMENSIONS AND WEIGHT	
Max. door leaf dimensions (H×L)	H to 8' 10" L to 5' 6"
Max. sash weight	396 lbs

MB-79N CASEMENT

WINDOW SYSTEM



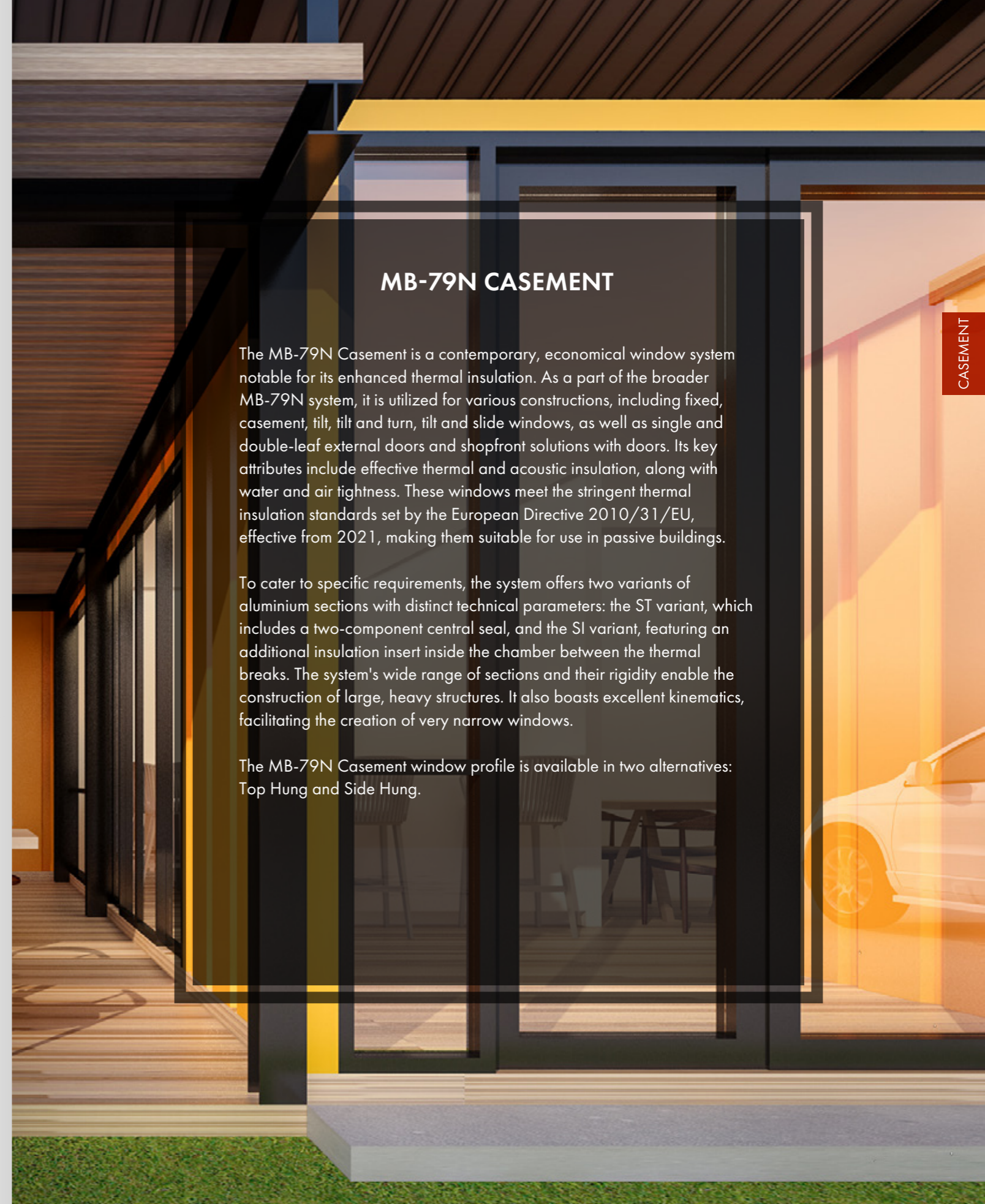
MB-79N CASEMENT

The MB-79N Casement is a contemporary, economical window system notable for its enhanced thermal insulation. As a part of the broader MB-79N system, it is utilized for various constructions, including fixed, casement, tilt, tilt and turn, tilt and slide windows, as well as single and double-leaf external doors and shopfront solutions with doors. Its key attributes include effective thermal and acoustic insulation, along with water and air tightness. These windows meet the stringent thermal insulation standards set by the European Directive 2010/31/EU, effective from 2021, making them suitable for use in passive buildings.

To cater to specific requirements, the system offers two variants of aluminium sections with distinct technical parameters: the ST variant, which includes a two-component central seal, and the SI variant, featuring an additional insulation insert inside the chamber between the thermal breaks. The system's wide range of sections and their rigidity enable the construction of large, heavy structures. It also boasts excellent kinematics, facilitating the creation of very narrow windows.

The MB-79N Casement window profile is available in two alternatives: Top Hung and Side Hung.

TECHNICAL DATA	MB-79N Top Hung / MB-79N Side Hung
Frame depth	2 3/4"
Sash depth	3 1/8"
Glazing thickness	frame: 11/16" - 2 1/8" sash: 7/16" - 2 1/2"
MAX. DIMENSIONS AND WEIGHTS OF STRUCTURES	
Max. door leaf dimensions (HxL)	H up to 8' 10" / 8' 2" L up to 4' 7" / 7' 10"
Max. sash weight (doors / windows)	396 lbs



CASEMENT

MB-86N

WINDOW AND DOOR SYSTEMS



MB-86 / 86 SI / AERO

The MB-86N aluminium system, an upgrade from the well-known MB-86, is a prominent window and door solution in the construction industry. This modernization introduces cutting-edge gaskets and the latest generation of thermal breaks, aimed at achieving superior thermal efficiency and airtightness. As a result, it is an energy-efficient product that enhances comfort while reducing heating costs.

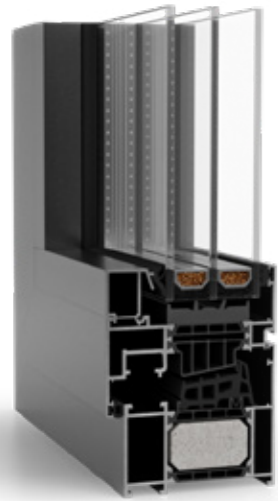
The system includes the MB-86N SI variant, which boasts additional insulating inserts within the profiles for improved thermal performance. The technology underpinning this system ensures durability, utilizing specially designed, rigid aluminium sections. This rigidity allows for the construction of large, stable structures with extensive glazing. A notable feature of the system is its outstanding kinematics, enabling the creation of slender doors and operable windows.

Additionally, the MB-86N range offers the MB-86US version with a concealed sash, and the modern MB-86US AERO option, featuring an aerogel insulation insert. Standard features include triple-pane glazing and a low window threshold with nosing. The MB-86N system offers flexibility in space design, allowing for custom-sized windows in various shapes. It is also highly resistant to corrosion and various atmospheric conditions.

MB-86N

TECHNICAL DATA	MB-86 WINDOWS	MB-86 DOORS	MB-86 US
Frame depth	3 1/16"	3 1/16"	3 1/16"
Sash depth	3 3/8"	3 1/16"	3 3/8"
Glazing thickness	frame: 9/16" - 2 5/16" sash: 13/16" - 2 11/16"	9/16" - 2 5/16"	frame: 1/4" - 2 1/16" sash: 9/16" - 2 3/8"
MAX. DIMENSIONS AND WEIGHTS OF STRUCTURES			
Max sash dimensions (H×L)	H to 9' 2" L to 5' 6"	H to 9' 10" L to 4' 7"	H to 8' 2" L to 5' 2"
Max sash weight	330 lbs	440 lbs	330 lbs

MB-86 profile alternatives:



MB-86N SI



MB-86 AERO



MB-86 US AERO



MB-86



MB-104 PASSIVE

WINDOW SYSTEM



MB-104 PASSIVE

The MB-104 Passive system is designed to produce windows that meet the most stringent thermal insulation standards, as certified by the PHI (Passive House Institute) Darmstadt. This system is a blend of technical prowess, exceptional thermal protection, and an aesthetically pleasing design. It features three-chamber profiles, with the central chamber serving as a 2 3/8" wide insulation chamber.

Available in two versions to cater to varying thermal insulation needs, the system offers the SI and AERO versions. In the AERO version, the space between the thermal separators is filled with aerogel inserts. Both versions excel in heat transfer parameters.

A key aspect of this system is its exceptional tightness, attributed to the unique design of the two-component central gasket, as well as the glazing and swing gaskets. These features ensure the windows are highly resistant to water penetration and can withstand significant wind loads.

TECHNICAL DATA	MB-104 PASSIVE WINDOW
Frame depth	3 3/4"
Leaf depth	4 1/8"
Glazing thickness	frame: 1 1/16" - 2 13/16" leaf: 1 3/8" - 3 3/16"
MAX STRUCTURE DIMENSIONS AND WEIGHT	
Max. dimensions of leaf	H to 9' 6" L to 5' 6"
Max. weight of the leaf	352 lbs

MB-FERROLINE

WINDOW SYSTEM WITH NARROW PROFILES



MB-FERROLINE

The Ferroline system is primarily designed for the renovation of historical buildings, offering profiles that effectively mimic steel joinery while delivering excellent technical performance. This system is adept at producing all types of inward opening windows (including turn, tilt, and turn-and-tilt) and fixed windows. These windows are not only noted for their superior thermal insulation but also boast commendable sound insulation, as well as water and air tightness.

Various profile shapes are available in the Ferroline system. One of its key features is the renovation frames, which enable the installation of new joinery without the need to remove old frames, thereby avoiding potential damage to the wall surrounding the windows. The visible width of the aluminium profiles is carefully adjusted to minimize any noticeable differences between the old and new windows in terms of external appearance.

Leveraging proven solutions and a range of new profiles with suitable shapes, the Ferroline system allows for the creation of structures that ideally complement and respect the character of the building

Alternative variants of MB-Ferroline window profiles

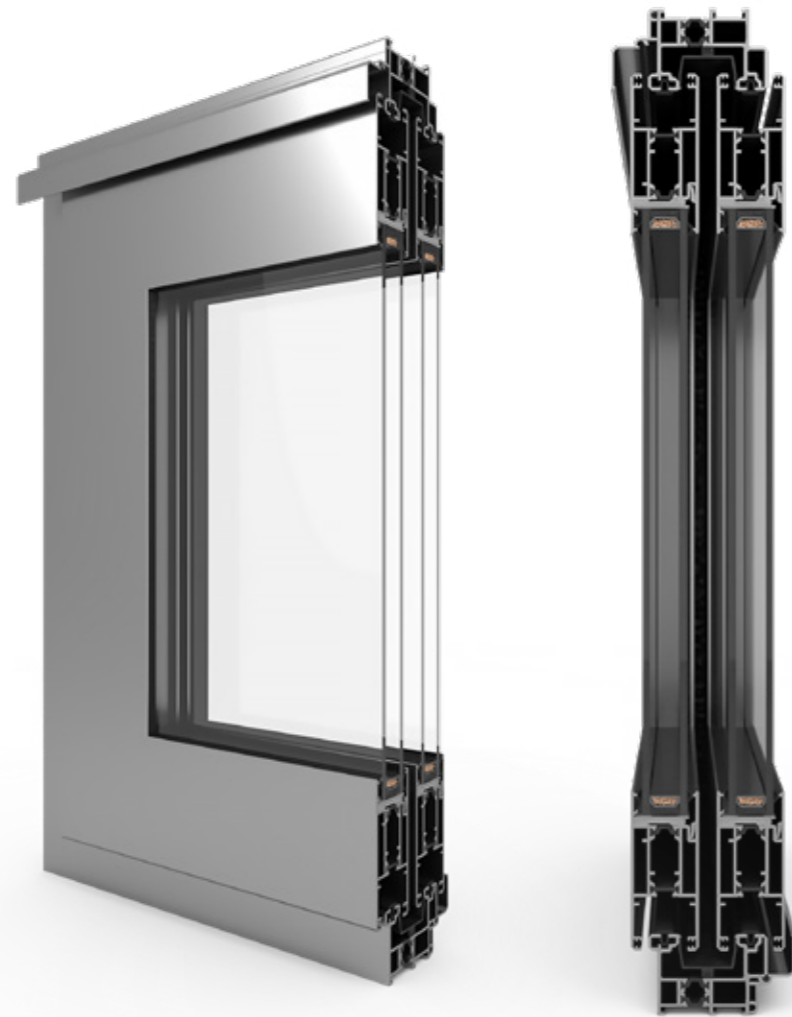


MB-FERROLINE INDUSTRIAL

TECHNICAL DATA	MB-FERROLINE
Frame depth	4 5/16"
Leaf depth	3 3/8" - 3 11/16"
Glazing thickness	9/16" - 2 7/16"
MAX STRUCTURE DIMENSIONS AND WEIGHT	
Max. dimensions of leaf	7' 10" x 4' 7"
Max. weight of the leaf	330 lbs

MB-SLIDE

SLIDING DOOR SYSTEM



TECHNICAL DATA	MB-SLIDE
Frame depth	2" and 3 13/16"
Leaf depth	1 7/16"
Glazing thickness	15/16"
MIN. VISIBLE PROFILE WIDTH	
Frame	1 3/4"
Leaf	2 11/16"
MAX STRUCTURE DIMENSIONS AND WEIGHT	
Max. dimensions of leaf	H to 8' 6" L to 5' 10"
Max. weight of the leaf	352 lbs

MB-SLIDE

The MB-Slide system offers vast design flexibility and space arrangement possibilities. It supports leaf dimensions up to 8' 6" by 5' 10", and is available in various configurations ranging from 2 to 6 modules. The system allows for glazing with glass packages as wide as 15/16".

Structures built using the MB-Slide system also boast commendable technical parameters. Thermal separators in the system ensure adequate thermal insulation for aluminium profiles. Additionally, the system features sliding gaskets, EPDM rebate, and glass gaskets, all contributing to the high tightness of the structure.

The installation depth for leaf profiles is 1 7/16", while frame depths are 1 15/16" for two-track rails and 3 13/16" for three-track rails. The MB-Slide system's sliding doors can operate in one of seven distinct patterns, enhancing versatility in their application.

MB-59 HS

HST LIFT AND SLIDE DOOR SYSTEM



MB-59 HS

Lift and slide doors, especially for terraces and balconies, are increasingly popular in modern architecture. They represent a trend where traditional balcony windows are being replaced by large glazed structures. The MB 59 system profiles are exceptionally durable, supporting structures with up to 6 leaves. This capability enables a seamless blend of indoor spaces with the natural environment, while providing convenient access to terraces, balconies, or open garden areas. The system is versatile, suitable for installation in individual houses as well as in larger structures like mullion and transom façades. It also accommodates permanent panels, where panes can be mounted directly into the frame.

An important feature of the MB 59 system is the option to install a low threshold, enhancing door usability, particularly for elderly or disabled individuals. Profiles are available with two or three guiding rails. The MB-59HS sliding doors offer movement in one of seven distinct patterns, adding to the system's flexibility and adaptability in various architectural designs.

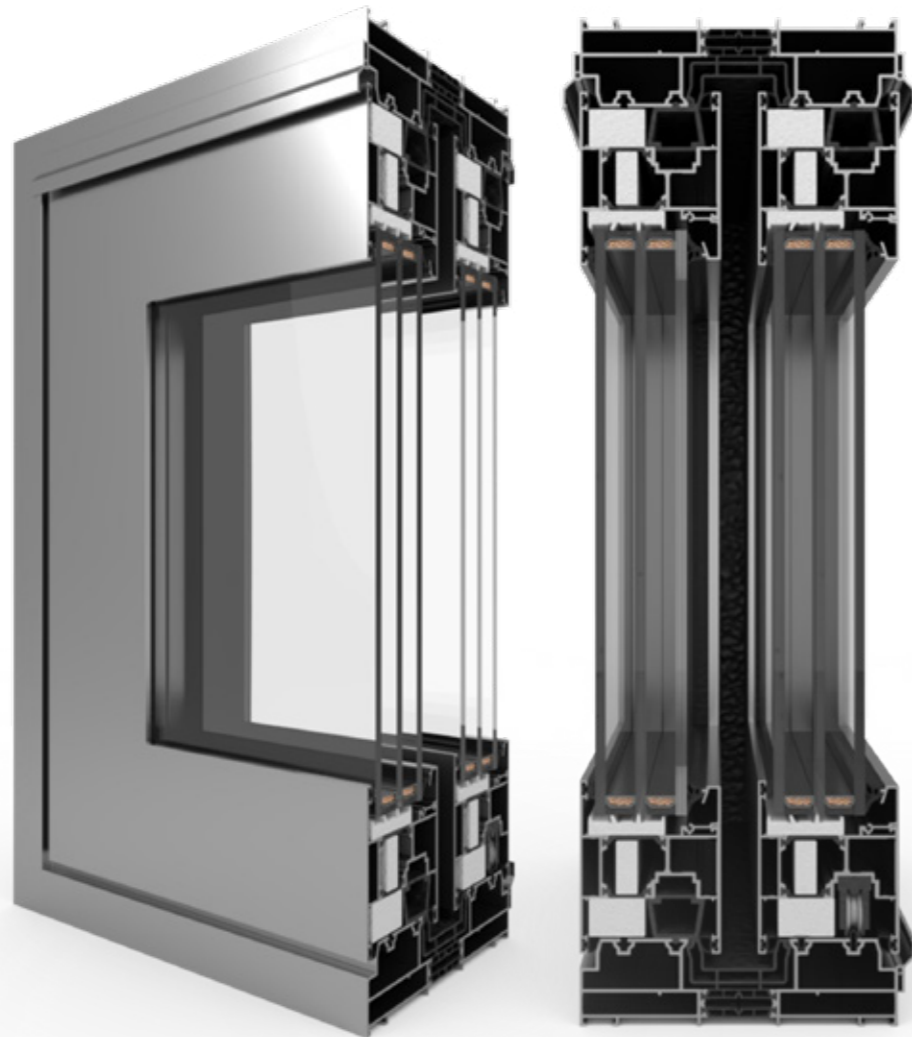
TECHNICAL DATA	MB-59HS ST / MB-59HS HI
Frame depth	4 3/4" (2-track prole), 7 13/16" (3-track prole)
Leaf depth	2 5/16"
Glazing thicknessA	to 1 5/8"
MIN. VISIBLE PROFILE WIDTH	
Frame	1 3/4"
Leaf	3 5/16" - 3 3/4"
MAX STRUCTURE DIMENSIONS AND WEIGHT	
Max. dimensions of leaf	9' 2" x 9' 10"
Max. weight of the leaf	661 lbs



MB-59 HS

MB-77 HS

HST LIFT AND SLIDE DOOR SYSTEM



TECHNICAL DATA	MB-77HS ST / MB-77HS HI
Frame depth	6 7/8" (2-track prole) 10 11/16" (3-track prole)
Leaf depth	3 1/16"
Glazing thickness	9/16" - 2 5/16"
MIN. VISIBLE PROFILE WIDTH	
Frame	1 7/8"
Leaf	3 3/4" - 4 1/8"
MAX STRUCTURE DIMENSIONS AND WEIGHT	
Max. dimensions of leaf	10' 6" x 10' 6"
Max. weight of the leaf	881 lbs



MB-77 HS

Glazed lift and slide doors, particularly those made with the MB-77 HS system, offer the dual benefits of visually expanding interior spaces and filling them with natural light. The system's well-designed profiles ensure both full thermal comfort and ease of use. Users can choose from several door arrangements to suit their needs.

The door frames in the MB-77 HS system come in two variants: two-track rail and three-track rail. A distinctive feature of this system is its closed shape of glazing strips. It also accommodates permanent panels, allowing for direct mounting of panes in the frame. The MB-77 HS system is notable for its versatility, enabling the construction of complex structures. This includes options such as fixed glazing within the frame, corner connections, or a 3-track rail frame. The MB-77HS sliding doors are designed to operate in one of seven different movement patterns, further enhancing their adaptability to various architectural requirements.

MB-86 FOLD LINE

FOLDING DOOR SYSTEM



MB 86 FOLD LINE

The MB-86 Fold Line system is specifically engineered for creating large glazed surfaces in a folding design. Its primary benefit lies in its ability to nearly eliminate the barrier between a room's interior and the outdoor space, seamlessly integrating the two. This system offers flexibility in terms of sash configuration, allowing the doors to be opened both outward and inward relative to the building. The leaves smoothly slide along rails, which house the entire operating mechanism.

This system comes with two options for thresholds. The first is a classic design featuring rebate sealing, and the second is a low-threshold design, which is highly convenient for users. To facilitate quick and easy door operation, the system incorporates steel rollers. Additionally, brushes are strategically placed in the driving corners to prevent dirt from entering, thus maintaining the system's cleanliness and functionality.

TECHNICAL DATA	MB-86 Fold Line
Frame depth	3 7/16"
Leaf depth	3 1/16"
Glazing thickness	9/16" - 2 7/16"
MIN. VISIBLE PROFILE WIDTH	
Frame	2 1/8"
Leaf	2 11/16"
MAX STRUCTURE DIMENSIONS AND WEIGHT	
Max. dimensions of leaf	3' 3" x 8' 10"
Max. weight of the leaf	220 lbs



FOLD LINE

MB-60E EI

FIREPROOF SYSTEMS



MB-60E EI

The MB-60E EI system is notable for its fire-resistant properties, achieving fireproof resistance as per European standards. This system is based on aluminum profiles with a thermal break from the MB-60E system, featuring a construction depth of 2 3/8". Its fireproofing capability is ensured by fire-resistant insulation elements installed within the inner chambers of the profile.

This system accommodates a range of typical fireproof windowpanes with thicknesses varying from 3/16" to 1 5/8". A unique aspect of the MB-60E EI system is the internal mounting of glass using glazing beads, differing from other fireproof systems. The system is also capable of creating doors with maximum sash dimensions of 4' 7" in width and 7' 10" in height, with an overall potential width reaching up to 8' 2".

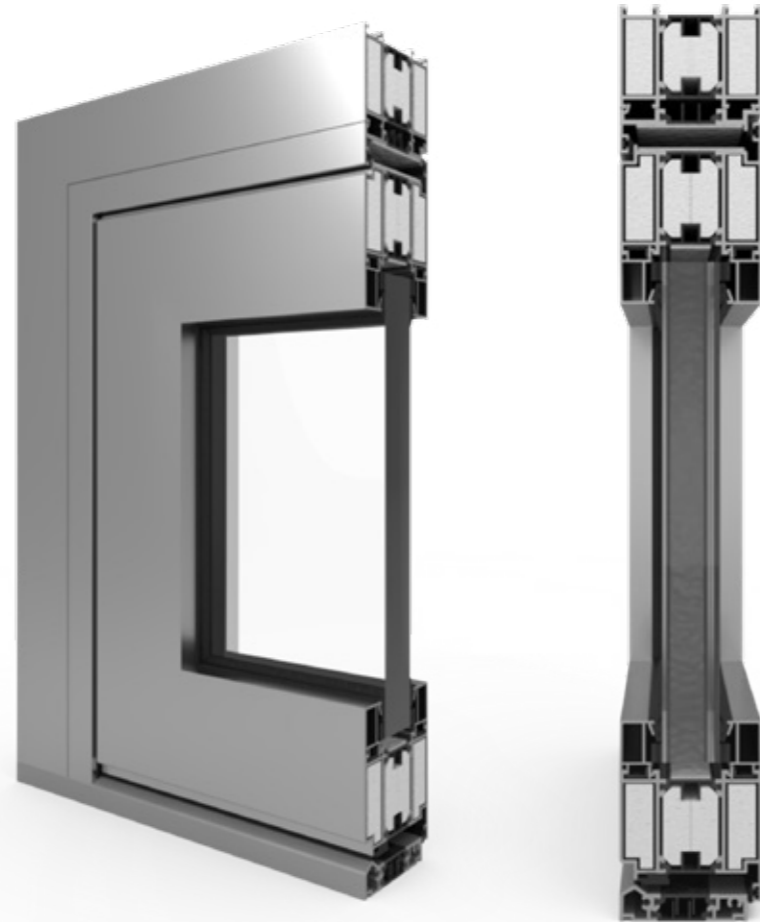
TECHNICAL DATA	MB-60E EI
Frame depth	2 3/8"
Leaf depth	2 3/8"
Glazing thickness	3/16" - 1 5/8"
MINIMAL WIDTH OF STRUCTURAL SECTIONS VISIBLE FROM THE OUTSIDE	
Door frame Wall frame	2 7/16" 2 3/16"
Door leaf Wall section	2 5/8" 3"
MAXIMAL STRUCTURE DIMENSIONS AND WEIGHT	
Max door leaf dimension (HxL)	L to 4' 7" H to 8'
Max leaf weight (door / windows)	264 lbs



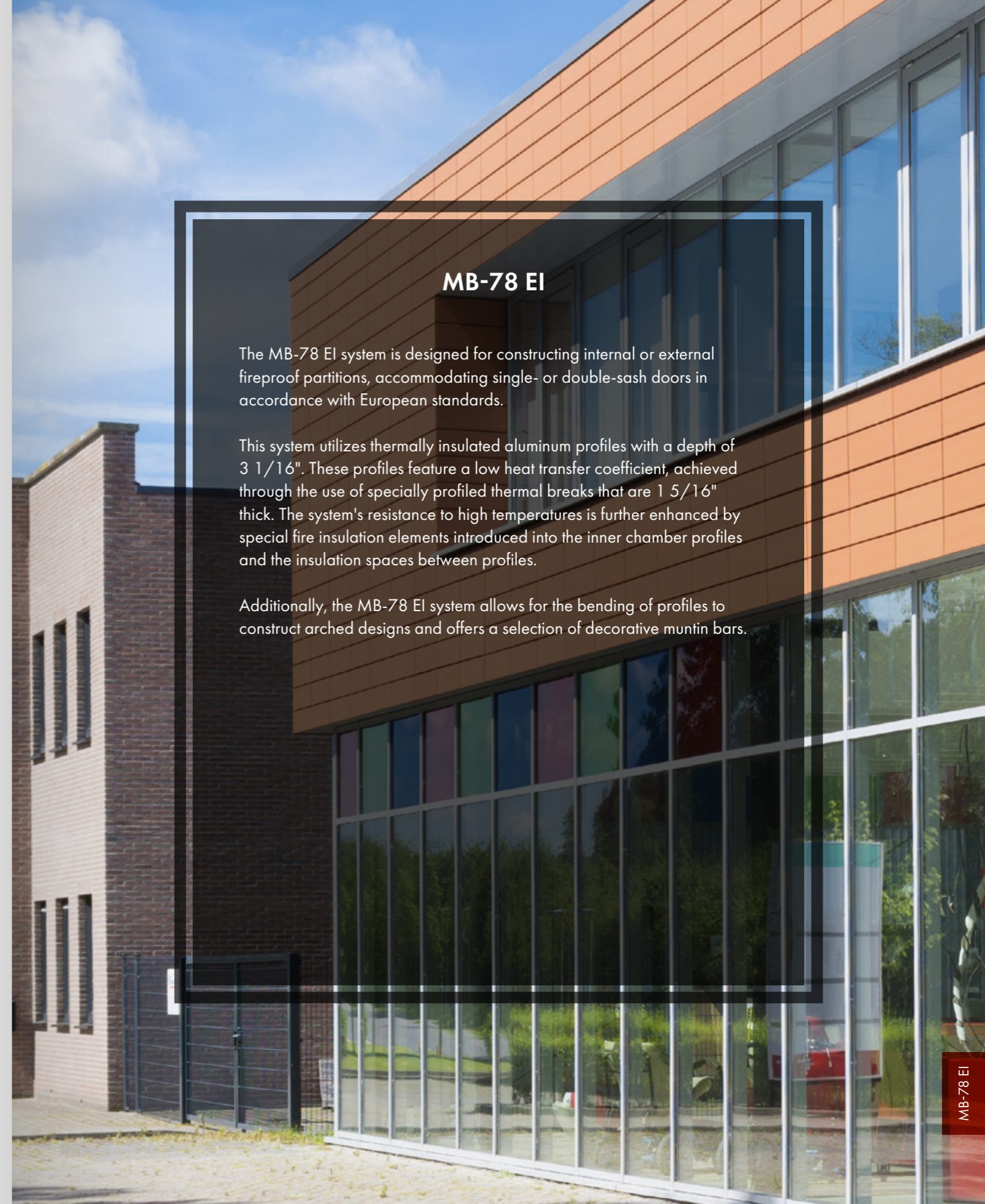
MB-60E EI

MB-78 EI

FIREPROOF SYSTEMS



TECHNICAL DATA	MB-78 EI
Frame depth/posts	3 1/16"
Leaf depth /bolts	3 1/16"
Glazing thickness	5/16" - 2"
MINIMAL WIDTH OF STRUCTURAL SECTIONS VISIBLE FROM THE OUTSIDE	
Door frame Wall frame	2" (2 13/16")
Door leaf Wall section	2 13/16" (2 1/64")
MAXIMAL DIMENSIONS AND WEIGHT OF THE CONSTRUCTION	
Max door leaf dimension (HxL)	H to 8' 2" L to 4' 7"
Max leaf weight (door / windows)	550 lbs



MB-78 EI

The MB-78 EI system is designed for constructing internal or external fireproof partitions, accommodating single- or double-sash doors in accordance with European standards.

This system utilizes thermally insulated aluminum profiles with a depth of 3 1/16". These profiles feature a low heat transfer coefficient, achieved through the use of specially profiled thermal breaks that are 1 5/16" thick. The system's resistance to high temperatures is further enhanced by special fire insulation elements introduced into the inner chamber profiles and the insulation spaces between profiles.

Additionally, the MB-78 EI system allows for the bending of profiles to construct arched designs and offers a selection of decorative muntin bars.

ALIPLAST SYSTEMS

aliplast

ECOFUTURAL	38
SUPERIAL	40
GENESIS	42
MAXLIGHT	44
PANORAMA	46
MODERNSLIDE	48
VISOGLIDE	50
ULTRAGLIDE	52
ULTRAGLIDE MAX LIGHT MONORAIL	54
VS 600	56



ECOFUTURAL

WINDOW AND DOOR SYSTEMS



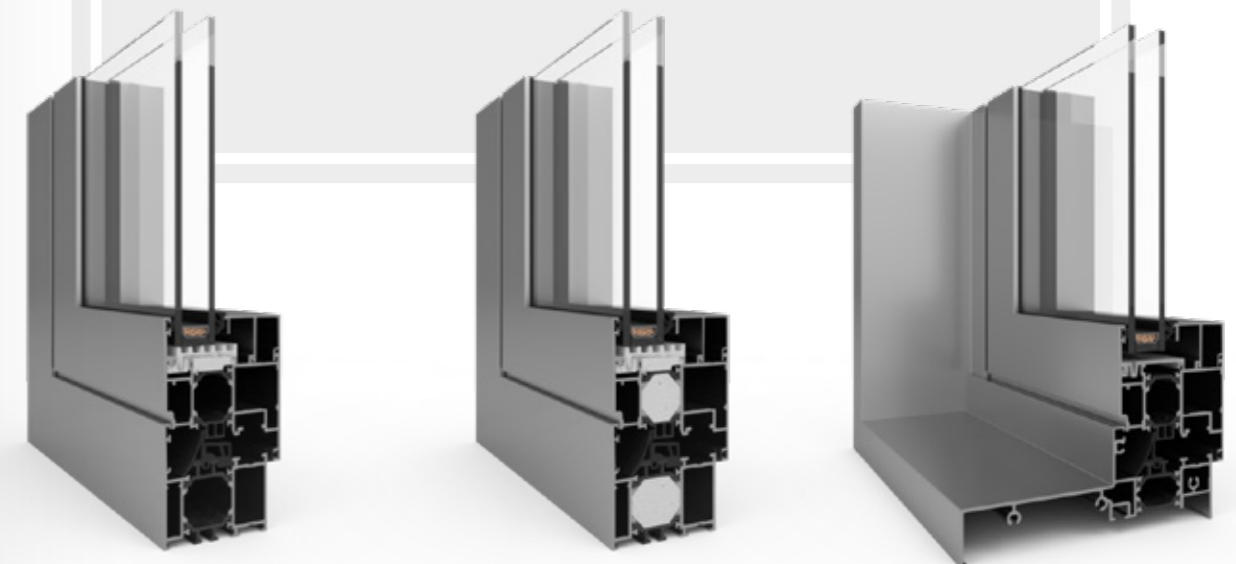
ECOFUTURAL

Ecofutura is a stable, heat-efficient, three-chamber window and door system designed for various construction needs. It enables the creation of shop windows, single or double-leaf windows, tilt-and-turn windows, and inward opening windows, as well as single or double-leaf doors. The system is also suitable for designing and producing Monoblock windows.

Ideal for areas with heightened thermal insulation standards, Ecofutura comes in two variants: Ecofutura i, which is insulated around the perimeter where the pane meets the profile, and Ecofutura i+, offering additional insulation in the space between the thermal separators.

ECOFUTURAL

Alternative variants of Ecofutura profiles



ECOFUTURAL i

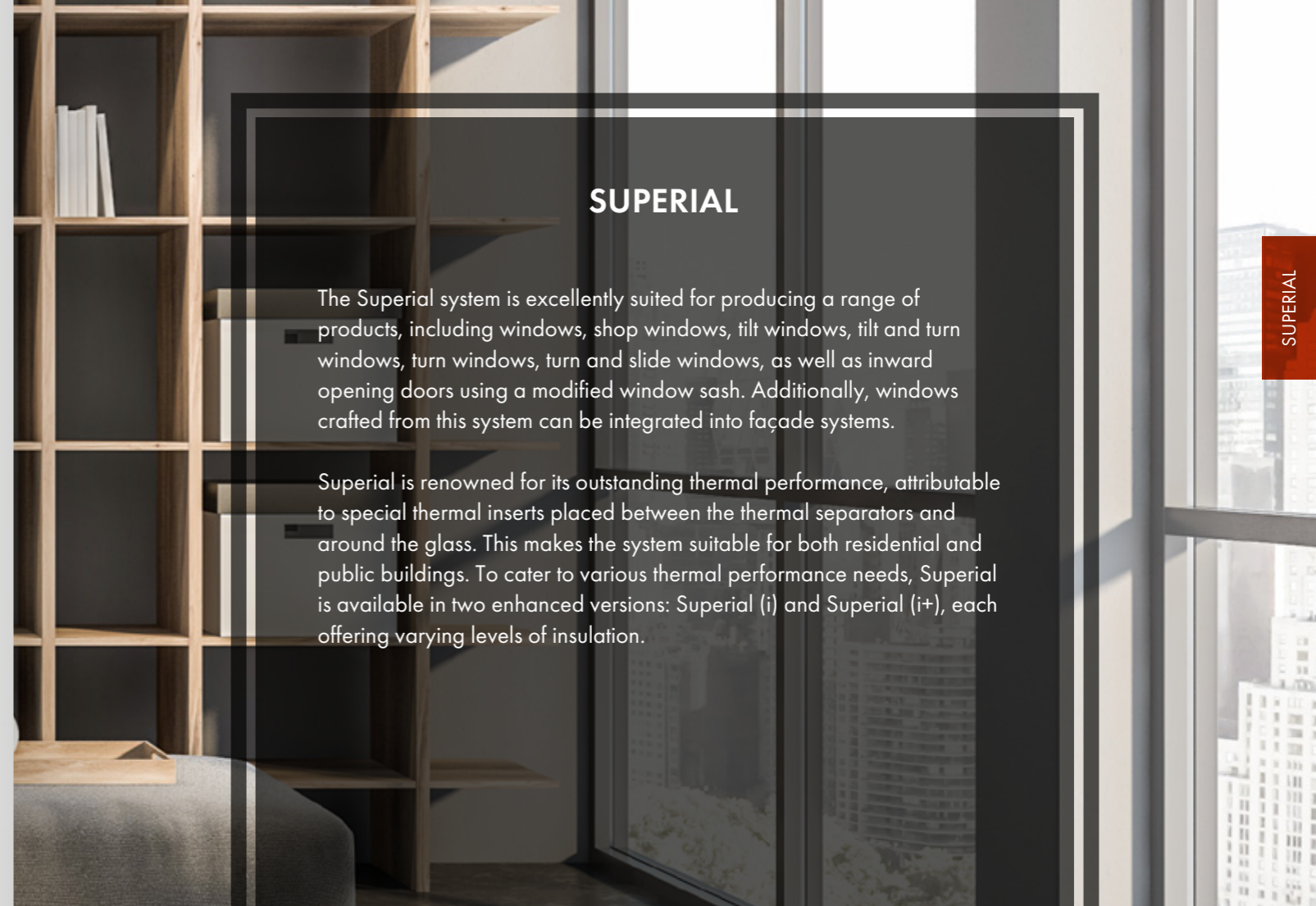
ECOFUTURAL i+

ECOFUTURAL MONOBLOCK

TECHNICAL DATA	ECOFUTURAL
Frame depth	2 9/16"
Leaf depth	3"
Glazing thickness	3/16" - 1 15/16" (permanent window and door) 1/2" - 2 5/16" (active window)
MIN. VISIBLE PROFILE WIDTH	
Frame ((door window)	2 7/16" (door) 2 3/16"; 2 9/16" (window)
Leaf ((door window)	3 1/2" (door); from 1 9/16" (window)
MAX STRUCTURE DIMENSIONS AND WEIGHT	
Max. dimensions of door leaf	4' 7" x 8' 6"
Max. weight of the leaf ((door window)	330 lbs / to 264 lbs

SUPERIAL

WINDOW AND DOOR SYSTEMS



SUPERIAL

The Superial system is excellently suited for producing a range of products, including windows, shop windows, tilt windows, tilt and turn windows, turn windows, turn and slide windows, as well as inward opening doors using a modified window sash. Additionally, windows crafted from this system can be integrated into façade systems.

Superial is renowned for its outstanding thermal performance, attributable to special thermal inserts placed between the thermal separators and around the glass. This makes the system suitable for both residential and public buildings. To cater to various thermal performance needs, Superial is available in two enhanced versions: Superial (i) and Superial (i+), each offering varying levels of insulation.

SUPERIAL

Alternative variants of Superial profiles



SUPERIAL i



SUPERIAL i+

TECHNICAL DATA	SUPERIAL
Frame depth	2 15/16"
Leaf depth	3 5/16" 2 15/16"
Glazing thickness	9/16" - 2 3/8"
MIN. VISIBLE PROFILE WIDTH	
Frame ((door window)	2 7/16" (door) from 2 3/16"
Leaf ((door window)	3 1/2" (door) from 1 9/16"
MAX STRUCTURE DIMENSIONS AND WEIGHT	
Max. dimensions of door leaf	5' 2" x 8' 6"
Max. weight of the leaf ((door window)	440 lbs / 330 lbs

GENESIS

WINDOW AND DOOR SYSTEMS



TECHNICAL DATA	GENESIS
Frame depth	2 15/16"
Leaf depth	3 5/16"
Glazing thickness	3/8" - 2 9/16"
MIN. VISIBLE PROFILE WIDTH	
Frame ((door window)	from 2 3/16"
Leaf ((door window)	from 1 11/16"
MAX STRUCTURE DIMENSIONS AND WEIGHT	
Max. dimensions of door leaf	5' 2" x 8' 6"
Max. weight of the leaf	352 lbs



GENESIS

The Genesis system offers a comprehensive range of profiles that facilitate the design of contemporary windows, doors, shop windows, and partitions, all boasting high functionality. This system establishes a new benchmark in window insulation, balancing it with superior ergonomics. It utilizes modern insulation materials to achieve these standards.

A key feature of the Genesis system is its enhanced sealing capabilities. In addition to the classic central window gasket, an additional thermal gasket has been integrated, significantly improving the tightness of constructions built with this system. The Genesis system offers protection not only from external elements like wind, cold, or heat but also from insects. To this end, the system has been developed with a specialized solution known as Flyscreen, an insect screen system.

MAXLIGHT

WINDOW AND DOOR SYSTEMS



MAXLIGHT

MaxLight is an aluminum system offered in four distinct versions: MaxLight Modern, MaxLight Design, MaxLight Steel, and MaxLight Invisible. Each version of the system is known for its exceptional durability and excellent thermal performance.

MaxLight Modern epitomizes contemporary aesthetics. This version enhances structures with an industrial and modern look, primarily due to the minimal visibility of the profile width.

MaxLight Design stands out with its smooth and slender profile line, making it especially suitable for buildings with a modern architectural style.

MaxLight Steel is developed with a specific profile shape that allows structures to closely resemble steel profiles, offering an alternative to traditional steel construction.

MaxLight Invisible features a unique frame design that enables the sash to be concealed. From the outside, this creates an appearance of continuous glazing within the frame, giving it a sleek and uninterrupted look.

MAXLIGHT

Alternative MaxLight profiles



MODERN

STEEL

DESIGN

INVISIBLE

TECHNICAL DATA	DESIGN	INVISIBLE	MODERN	STEEL
Frame depth	3 1/4"	2 15/16"	2 15/16"	4 1/8"
Leaf depth	3 5/8"	3 5/16"	3 5/16"	3 13/16"
Filling thickness	to 2 5/16"	to 2 5/16"	to 2 11/16"	to 2 5/16"
Glazing bead height	9/16"	9/16"	9/16"	9/16"
MINIMAL WIDTH OF STRUCTURAL SECTIONS VISIBLE FROM THE OUTSIDE				
Min. width of window opened inside visible from the outside	frame: 1 3/8" sash: 1 3/8"	frame (hidden sash): 2 3/4"	frame: 1 3/8" sash: 1 3/8"	frame: 1 3/8" sash: 1 3/8"
Min. width of door opened inside visible from the outside	frame: 1 3/8" sash: 2 11/16"	-	frame: 1 3/8" sash: 1 3/8"	frame: 1 3/8" sash: 1 3/8"
Min. width of door opened outside visible from the outside	frame: 9/16" sash: 3 7/16"	-	frame: 9/16" sash: 3 7/16"	frame: 9/16" sash: 3 7/16"

PANORAMA

FOLDING DOOR SYSTEM



TECHNICAL DATA	PANORAMA
Frame depth	3"
Leaf depth	3"
Glazing thickness	5/8" - 1 15/16"
MIN. VISIBLE PROFILE WIDTH	
Frame	57,5 mm
Leaf	2 7/8"
MAX STRUCTURE DIMENSIONS AND WEIGHT	
Max. dimensions of door leaf	3' 11" x 8' 2"
Max. weight of the leaf	to 220 lbs



PANORAMA

The Panorama system represents a technologically advanced solution for sliding accordion terrace doors. This system can accommodate 2 to 8 leaves, which glide smoothly along rails equipped with the entire operating mechanism. A notable feature of this system is the use of specially designed steel rollers, which facilitate effortless and fluid opening and closing of the doors.

A key innovation in the Panorama system is the absence of moving posts. Instead, the leaves are connected using system hardware, resulting in a lighter, more modern-looking structure that maximizes available space.

The Panorama system offers two threshold options: a continuation of the frame used on the top and sides, or a low threshold that is embedded in the floor. The system's high-quality EPDM gaskets and brushes provide effective protection against various atmospheric conditions, ensuring durability and longevity.

PANORAMA

MODERNSLIDE

HST LIFT AND SLIDE DOOR SYSTEM



MODERNSLIDE

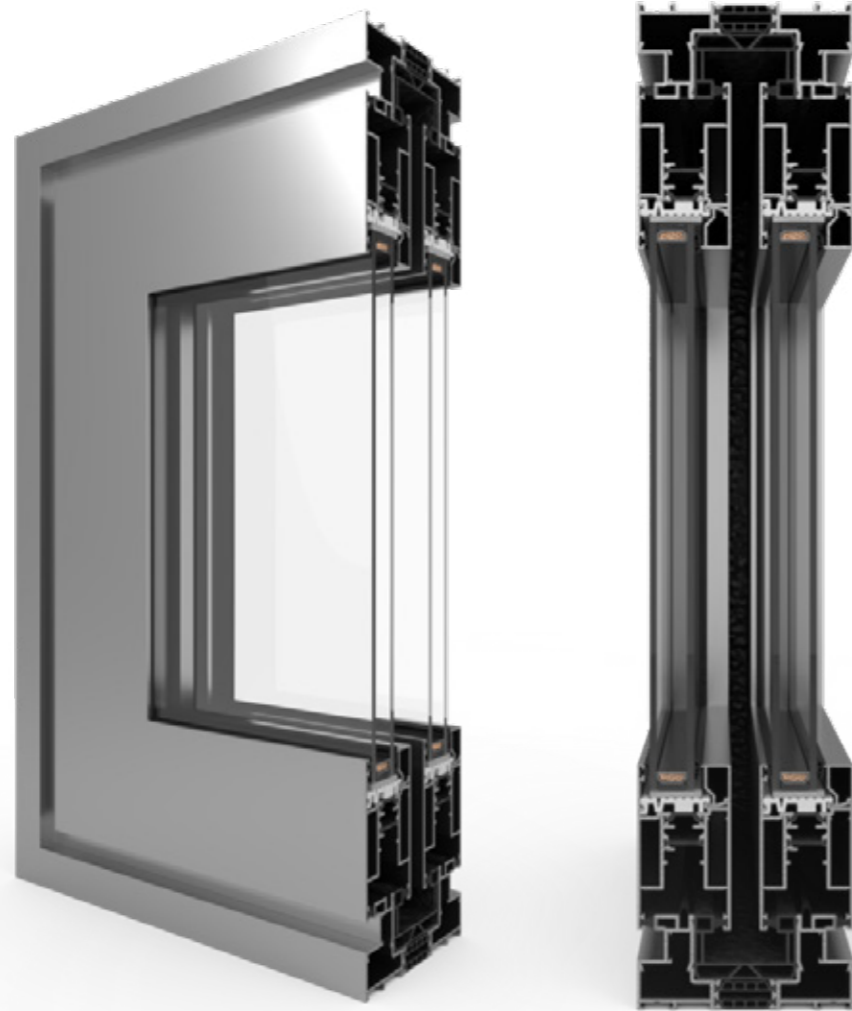
This system, with its enhanced thermal insulation, is tailored for designing sliding structures. It supports a variety of designs, including two, three, and even four-track rail structures, offering flexibility in building façade design. Despite the ability to support a maximum structural leaf weight of 550 lbs, the system maintains a lightweight, streamlined, and modern appearance.

Modernslide is also suitable as a foundation for Monoblock solutions. Monoblock sliding structures are uniquely installed within a room's thermal insulation layer. Among its standout features is the Galandage, a distinct and highly attractive option not commonly found in commercial sliding door systems. In this design, the sliding leaves can be almost entirely concealed within the building wall when open, significantly enhancing the clear width of the doorway and offering a seamless transition between indoor and outdoor spaces.

TECHNICAL DATA	MODERNSLIDE
Frame depth	73 - 7 11/16"
Leaf depth	1 3/4"
Glazing thickness	15/16", 1 1/8" or 1 1/4"
MIN. VISIBLE PROFILE WIDTH	
Frame	1 7/8"
Leaf	2 13/16"
MAX STRUCTURE DIMENSIONS AND WEIGHT	
Max. dimensions of door leaf	4' 11" x 7' 10"
Max. weight of the leaf	550 lbs

VISOGLIDE

HST LIFT AND SLIDE DOOR SYSTEM



TECHNICAL DATA	VISOGLIDE
Frame depth	4 5/8" 5" 5 9/16"
Leaf depth	2 1/64"
Glazing thickness	1/4" - 1 7/16"
MIN. VISIBLE PROFILE WIDTH	
Frame	1 1/16" / 2 1/16"
Leaf	3 9/16"
MAX STRUCTURE DIMENSIONS AND WEIGHT	
Max. dimensions of door leaf	5' 6" x 7' 10"
Max. weight of the leaf	550 lbs



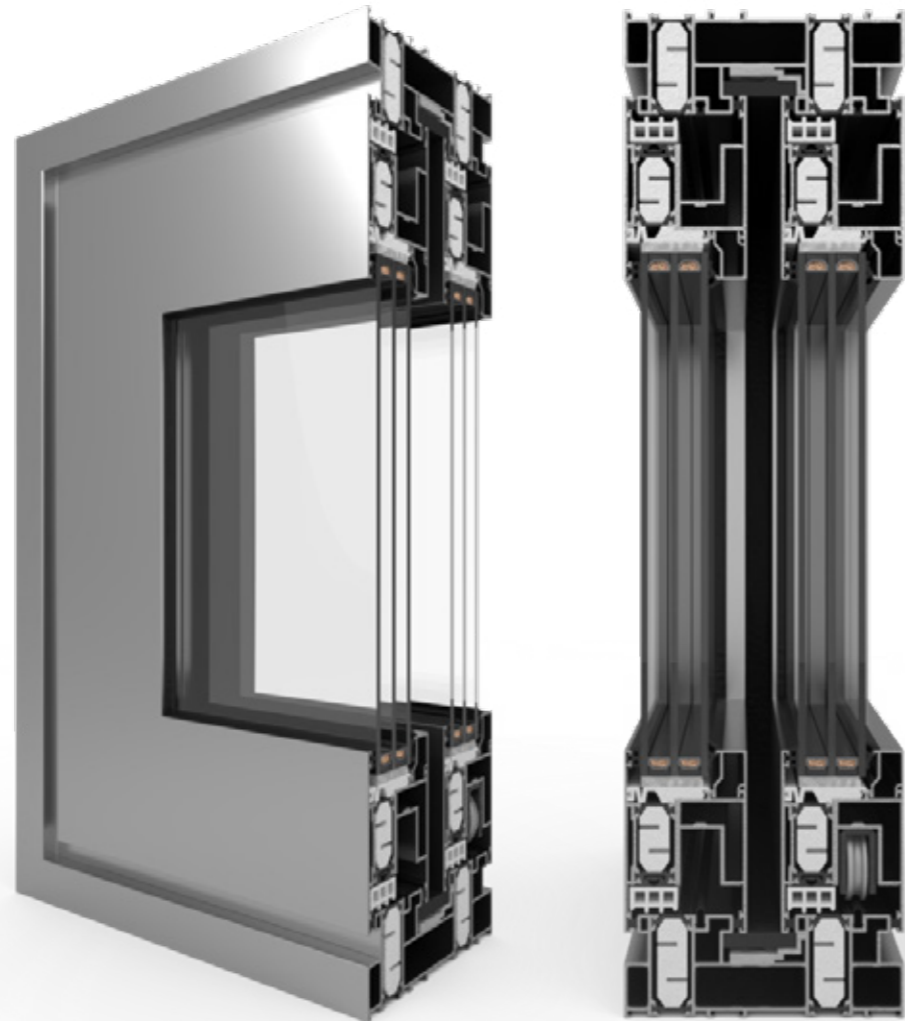
VISOGLIDE

This system features three-chamber profiles with thermal insulation, designed specifically for constructing sliding systems and lift-and-slide systems, both with options for a high or low threshold. It offers versatility in design, allowing for combinations of up to six elements on two- or three-track rails. This makes it particularly suitable for entrances to terraces, balconies, or gardens.

The doors in this system operate smoothly thanks to special carriages situated under the movable elements, ensuring the structure does not overhang. Each door is equipped with a brush seal and features an extremely narrow, 1 5/16" wide labyrinth post, applicable in both sliding and lift-and-slide leaves. The system also provides a wide array of window sill profiles, including those with hidden drainage, and various angle profiles, enhancing its adaptability and functionality in different architectural contexts.

ULTRAGLIDE

HST LIFT AND SLIDE DOOR SYSTEM



TECHNICAL DATA	ULTRAGLIDE
Frame depth	6" - 9 7/16"
Leaf depth	2 5/8"
Glazing thickness	9/16" - 2 1/16"
MIN. VISIBLE PROFILE WIDTH	
Frame	1 3/16" 2 1/4"
Leaf	4"
MAX STRUCTURE DIMENSIONS AND WEIGHT	
Max. dimensions of door leaf	9' 2" x 9' 10"
Max. weight of the leaf	881 lbs



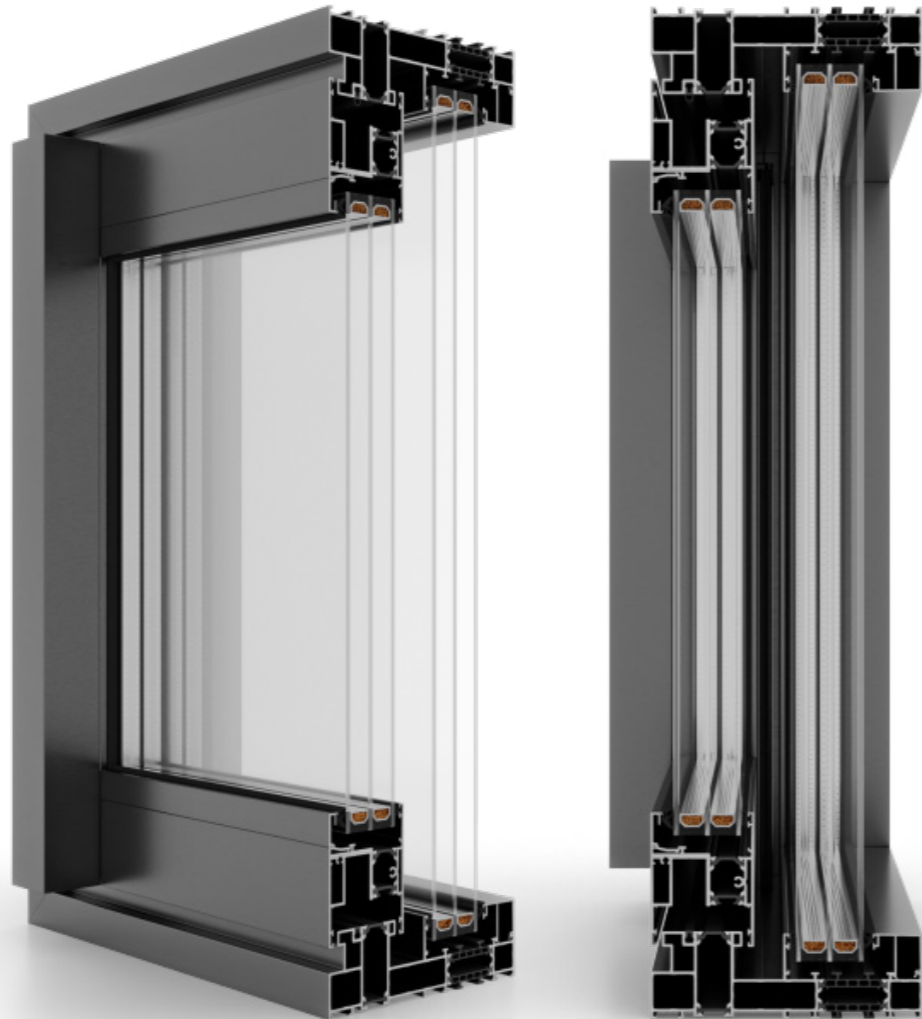
ULTRAGLIDE

This system is specifically designed for constructing lift-and-slide doors, aligning with the latest standards in thermal insulation, aesthetics, and safety. It incorporates a thermal spacer enriched with fiberglass, available in widths of 7/8" and 1 1/8". The inclusion of thermal and glazing inserts further enhances the thermal insulation of the cross-section.

A key feature of this system is its capability to design structures with very large dimensions for active sashes. This allows for the creation of extensive glazed areas, which not only provide exceptional interior lighting and aid in interior design but also ensure the stability, functionality, and lightness of the structure. Additionally, the system accommodates the installation of either single or double-chamber glazing, offering versatility to meet various design and insulation requirements.

ULTRAGLIDE MAX LIGHT MONORAIL

HST LIFT AND SLIDE DOOR SYSTEM



ULTRAGLIDE MAX LIGHT MONORAIL

The Ultraglide MAX Light Monorail is a sleeker variant of the established Ultraglide system. This high-quality sliding system, featuring a thermal break, is tailored for large glass surfaces and meets the highest standards in thermal and acoustic insulation. In addition to its technical attributes, the system offers a broad color range, with the option to select any color from the RAL palette.

This new system is specifically designed for lift-and-slide constructions. Its slender profiles, coupled with expansive glazing, ensure maximum light penetration into interiors, creating a luxurious ambiance. The elegant and modern design of the Ultraglide MAX Light Monorail makes it an ideal choice for both residential and public buildings, enhancing their aesthetic appeal and functionality.

TECHNICAL DATA	ULTRAGLIDE MAX LIGHT MONORAIL
Frame depth	7"
Leaf depth	2 5/8"
Glazing thickness	9/16" - 2 1/64"
MIN. VISIBLE PROFILE WIDTH	
Frame	2 3/16"
Leaf	1 3/4"
MAX STRUCTURE DIMENSIONS AND WEIGHT	
Max. dimensions of door leaf	H to 9' 2" L to 9' 10"
Max. weight of the leaf	970 lbs



MAX LIGHT

VS 600

GUILLOTINE SYSTEM



TECHNICAL DATA	VS 600
Frame depth	5 1/8"
Leaf depth	2 1/16"
Glazing thickness	15/16" - 1 1/8"
MIN. VISIBLE PROFILE WIDTH	
Frame	7/8"
Leaf	1 5/8"
MAX STRUCTURE DIMENSIONS AND WEIGHT	
Max. dimensions of door leaf	3' 9" x 4' 11"
Max. weight of the leaf	59 lbs



VS 600

The VS 600 system is engineered for constructing lift windows, specifically targeting the American and British markets. It features a dedicated spring-based hardware mechanism that enables the window leaves to be moved up and down. Additionally, this system incorporates extra hardware that allows the leaves to tilt, facilitating easy cleaning.

This system is versatile in its applications, enabling the design of modern window constructions in various styles. It is widely used in the design of residential housing and public buildings, such as schools and hospitals, and is also suitable for renovation projects. The assembly process of the VS 600 system is streamlined, thanks to an outer frame with a square cross-section and sash connections that require minimal machining, thus simplifying and expediting installation.

DECEUNINCK SYSTEMS

deceuninck

DECALU 88 STANDARD	60
DECALU 94 RETRO	62
DECALU 110 STEEL	64
DECALU 88 HIDDEN	66
DECALU 88 DOORS	68
DECALU 88 FOLDING DOORS	70
DECALU 163 SLIDE	72



DECALU 88 STANDARD

WINDOW AND DOOR SYSTEMS



DECALU 88 STANDARD

Decalu 88 Standard is the foundational system within the Decalu product line. Despite its straightforward design, it offers a wide range of manufacturing possibilities. This system is particularly recommended for producing monoblock windows or windows suited for renovation projects.

An important aspect of the Decalu 88 Standard system's design is its hardware, which is distinctively separated from the aluminium profiles using a special PVC profile. This patented and exclusive design ensures that the fittings operate exceptionally smoothly and are well-protected against corrosion.

A key feature of this system is its extraordinary tightness, achieved through the integration of machine-fitted gaskets with the aluminium profiles. The use of machine-fitted gaskets in the profiles guarantees consistent quality and tightness, a notable advantage over manually fitted alternatives.

TECHNICAL DATA	Decalu 88 Standard
Frame depth ((door window)	3 7/16"
Leaf depth ((door window)	3 3/4" 3 13/16"
Glazing thickness (permanent window and door / active window)	to 2 13/16"
MIN. VISIBLE PROFILE WIDTH	
Frame ((door window)	1 11/16" 3"
Leaf ((door window)	1 1/4" 2 13/16"
MAX STRUCTURE DIMENSIONS AND WEIGHT	
Max. dimensions of tilt-and-turn window	8' 8" x 3' 11"
Max. dimensions of door leaf	4'3" x 8' 2"
Max. weight of the leaf ((door window)	220 264 lbs; 352 lbs



DECALU 94 RETRO

WINDOW SYSTEMS



DECALU 94 RETRO

The Decal 94 Retro system is crafted to produce windows that emulate the appearance of retro-style wooden windows, merging modern technology with a classic aesthetic. Windows constructed with this system gain an added touch of elegance through the incorporation of glazing bars, a feature commonly found in wooden windows.

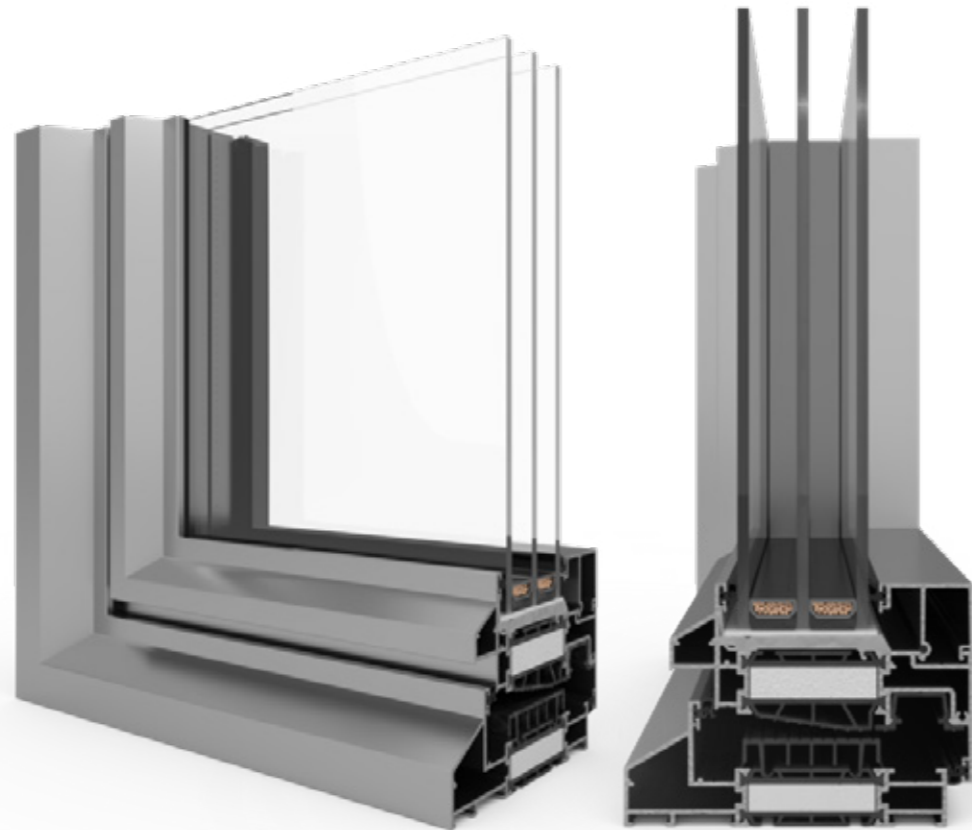
In the Decal 94 Retro system, windows can be fabricated with either a fixed or moving post. Both the fixed posts and glazing bars are designed to mirror the look of traditional frame and sash profiles. Enhancing the wood-like aesthetic, the system includes additional features such as concealed hinges, non-visible seals, and non-visible drainage, all contributing to the overall elegant appearance of the woodwork.

TECHNICAL DATA	Decalu 94 Retro
Frame depth (window)	3 11/16"
Leaf depth (window)	4 1/16"
Glazing thickness	to 2 13/16"
MIN. VISIBLE PROFILE WIDTH	
Frame (window)	1 11/16"
Leaf (window)	1 1/4"
MAX STRUCTURE DIMENSIONS AND WEIGHT	
Max. dimensions of tilt-and-turn window	8' 8" x 3' 11"
Max. weight of the leaf (window)	220/264 lbs



DECALU 110 STEEL

WINDOW SYSTEMS



DECALU 110 STEEL

Aluminum windows constructed using the Decalu 110 Steel system are notably distinguished by their external appearance, characterized by a "steel look." The design features characteristic cut profiles that emulate the style of steel joinery. These windows can be built with either fixed or moving posts, offering versatility in design.

A significant aspect of the Decalu 110 Steel system is the combined low height of the frame and sash, measuring only 3 1/4". This design results in a substantially larger glazing area, allowing for enhanced natural lighting in rooms. For windows made with the Decalu 110 Steel system, the installation of glazing bars is recommended. When paired with the steel-like appearance of the frame, these bars contribute to an intriguing and slightly more industrial aesthetic for the building.

DECALU 110 STEEL

TECHNICAL DATA	Decalu 110 Steel
Frame depth (window)	4 5/16"
Leaf depth (window)	4 1/16"
Glazing thickness	to 2 13/16"
MIN. VISIBLE PROFILE WIDTH	
Frame (window)	1 11/16"
MAX STRUCTURE DIMENSIONS AND WEIGHT	
Max. dimensions of tilt-and-turn window	8' 8" x 3' 11"
Max. weight of the leaf (window)	220/264 lbs

DECALU 88 HIDDEN

WINDOW SYSTEMS



DECALU 88 HIDDEN

The system incorporates patented "concealed sash" solutions. In this design, the connections between the wing-fixed glazing, sash-wing, and fixed-glazing quarters are aligned in the same external plane. As a result, both fixed and openable (with sash) quarters in this system present a uniform appearance.

Architects highly regard the aesthetic of windows created using the Decalu 88 Hidden system. This design is particularly striking in office buildings but also adapts well to residential construction. Decalu 88 Hidden windows are especially appealing in structures featuring external vertical and horizontal rustication, or when they are installed within rectangular or square external prefabricated panels, enhancing the building's overall architectural character

DECALU 88 HIDDEN

TECHNICAL DATA	Decalu 88 Hidden
Frame depth (window)	3 7/16"
Leaf depth (window)	3 7/16"
Glazing thickness	to 2 13/16"
MIN. VISIBLE PROFILE WIDTH	
Frame (window)	3 3/16"
Leaf (window)	1 11/16" (invisible)
MAX STRUCTURE DIMENSIONS AND WEIGHT	
Max. dimensions of tilt-and-turn window	8' 8" x 3' 11"
Max. weight of the leaf (window)	220/264 lbs

DECALU 88 DOORS

DOOR SYSTEMS



DECALU 88 DOORS

Energy-efficient and durable aluminium doors. Doors based on the Decalu 88 door system boast a low heat transfer coefficient. The U-Factor, in 3' 11" x 8' 2" doors with triple glazing units is 0.16.

The thermal insulating power can be improved by installing thicker IGUs. The maximum feasible IGU thickness is 2 7/16".

An innovative standard feature of the doors is an anti-bimetallic thermal strip. The thermal strip prevents deformation of the door even at high sunlight exposure.

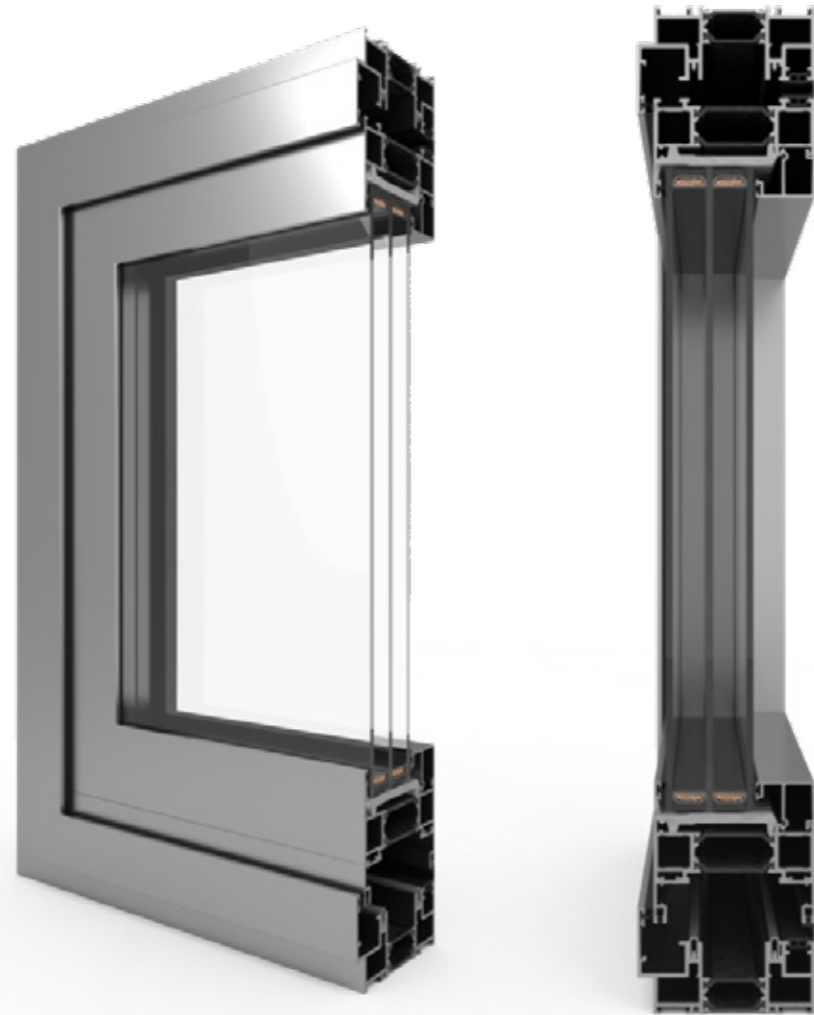
The Decalu 88 door system facilitates a very easy installation of roller hinges or surface hinges.

The door and frame installation depth is 3 7/16", and the profiles feature gaskets integrated by an automatic production process.

TECHNICAL DATA	Decalu 88 Doors
Frame depth (door)	3 7/16"
Leaf depth (door)	3 7/16"
Glazing thickness	to 2 7/16"
MIN. VISIBLE PROFILE WIDTH	
Frame (door)	2 1/16"
Leaf (door)	3 1/16"
MAX STRUCTURE DIMENSIONS AND WEIGHT	
Max. dimensions of door leaf	4' 7" x 9' 6"
Max. weight of the leaf	352 lbs

DECALU 88 FOLDING DOORS

FOLDING DOOR SYSTEM



FOLDING DOORS

Folding doors crafted using the Decalu 88 Folding Doors system offer excellent thermal insulation during winter, and in summer, they can open up a house to a garden or terrace seamlessly.

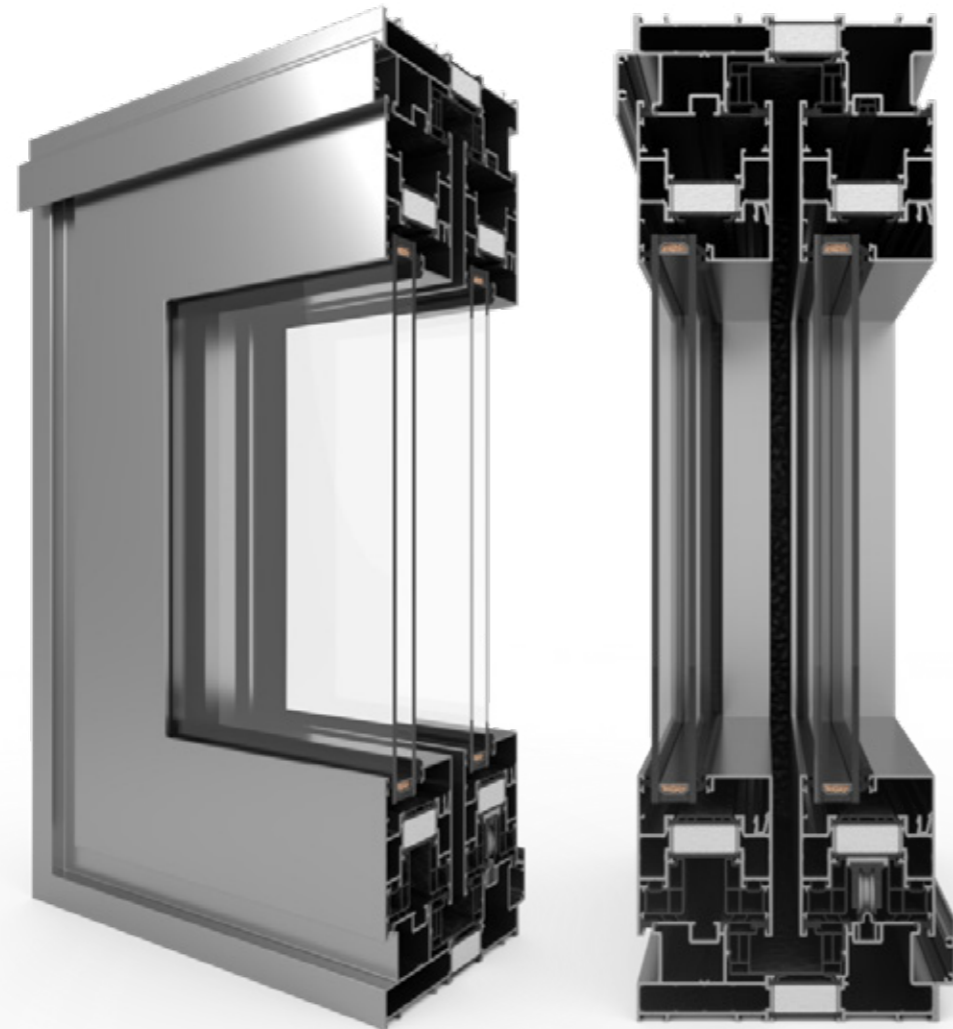
This unique system of hardware and profiles enables the creation of structures up to 9' 10" in height, with no restrictions on width.

Additionally, a specially designed adjustment profile in the system allows for the production of all leaves in a uniform size, ensuring consistency and harmony in design.

TECHNICAL DATA	DECALU 88 FOLDING DOORS
Installation depth	3 13/16"
Filling thickness	to 2 7/16"
MAX CONSTRUCTION DIMENSIONS AND WEIGHT	
Max leaf dimensions (H×L)	L to 3' 11" H to 9' 10"
Max leaf weight (door window)	330 lbs

DECALU 163 SLIDE

LIFT AND SLIDE HST DOOR



DECALU 163 SLIDE

The Decalu 163 Slide system offers lift and slide doors that combine ease of operation, superior insulation, and elegant design, making them ideal for both homes and public institutions. They serve as an excellent means to enhance room illumination.

This system presents remarkable design flexibility. Structures can be configured with up to 6 leaves and operate along three tracks.

A noteworthy feature is the slender and narrow profiles of the frames and sashes, which result in a larger glazing area. Moreover, the total visible width of the movable post is just 2 7/8", further emphasizing the system's sleek and refined appearance.

TECHNICAL DATA	Decalu 163 Slide
Installation depth	6 7/16"
Filling thickness	2 5/16"
MAX CONSTRUCTION DIMENSIONS AND WEIGHT	
Max leaf dimensions (HxL)	H to 10' 6" L to 10' 9"
Max leaf weight (door window)	881 lbs



CORTIZO SYSTEMS



CORTIZO CASEMENT	76
COR VISION	78
COR VISION PLUS	80



CORTIZO CASEMENT

WINDOW SYSTEMS



CORTIZO CASEMENT

The Cortizo Casement system is specifically tailored for outward-opening windows and is distinguished by its delicate, slender profiles made from high-quality aluminium. This system is notable for its well-balanced glass-to-frame ratio, which maximizes the entry of natural light into interiors. Windows crafted using this system are robust, adhering to strict safety standards.

A key feature of the Cortizo Casement system is its thermal break, providing excellent thermal and acoustic performance in the standard version. For enhanced insulation, there is also an HI version available.

The system offers a wide range of finishing options in various RAL colors. Standard colors come with a gloss lacquered finish, but a matt version is also available. The windows can be equipped with a flush profile, espagnolettes, and scissor hinges. Furthermore, the system can include special fittings for ease of everyday use, cleaning, and maintenance, known as the easy-clean feature. Windows in this system are available in different sizes and glazing units, depending on the chosen sashes.

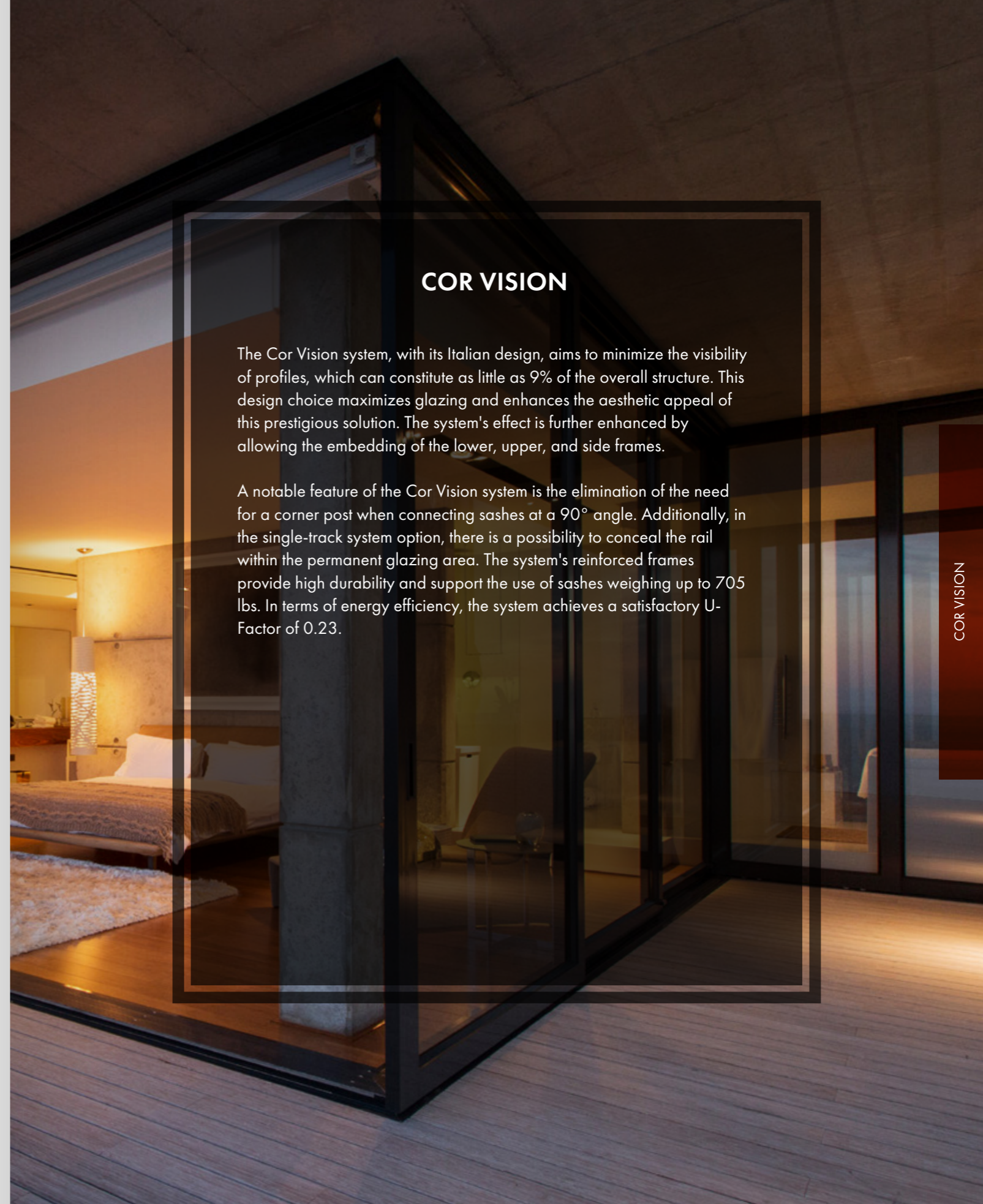
TECHNICAL DATA	Cortizo Casement
Frame depth (window)	2 3/4"
Leaf depth (window)	2 3/4"
Glazing thickness	9/16" - 1 3/4"
MIN. VISIBLE PROFILE WIDTH	
Frame (window)	9/16"
Leaf (window)	1 15/16"
MAX STRUCTURE DIMENSIONS AND WEIGHT	
Max. dimensions of tilt-and-turn window (Top Hung)	H to 5' 10" L to 5' 10"
Max. weight of the leaf (window)	220 lbs

COR VISION

HST LIFT AND SLIDE DOOR SYSTEM



TECHNICAL DATA	Cor Vision
Building depth	4 9/16" 3-track-7 3/16"
Filling thickness	1 7/16" - 2 1/8"
MAXIMUM DIMENSIONS AND WEIGHT OF THE CONSTRUCTION	
Max dimensions of the window sash (H x L)	H up to 9' 10" L up to 8' 2"
Max weight of the sash (door window)	705 lbs



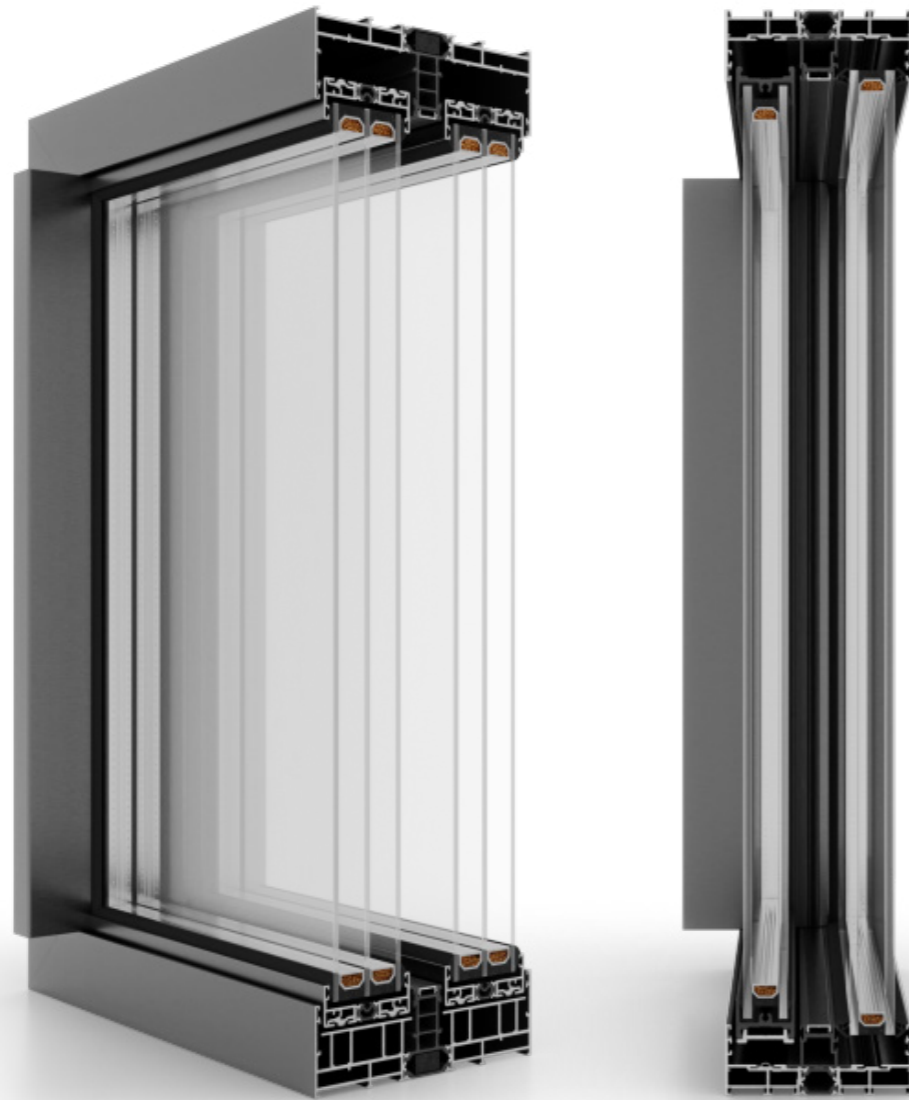
COR VISION

The Cor Vision system, with its Italian design, aims to minimize the visibility of profiles, which can constitute as little as 9% of the overall structure. This design choice maximizes glazing and enhances the aesthetic appeal of this prestigious solution. The system's effect is further enhanced by allowing the embedding of the lower, upper, and side frames.

A notable feature of the Cor Vision system is the elimination of the need for a corner post when connecting sashes at a 90° angle. Additionally, in the single-track system option, there is a possibility to conceal the rail within the permanent glazing area. The system's reinforced frames provide high durability and support the use of sashes weighing up to 705 lbs. In terms of energy efficiency, the system achieves a satisfactory U-Factor of 0.23.

COR VISION PLUS

HST LIFT AND SLIDE DOOR SYSTEM



COR VISION PLUS

The advanced version of the Cor Vision system, Cor Vision Plus, is intended for use in places where large glazing is planned. This prestigious system allows the glass area to be as much as 94% of the opening. This gives access to the maximum amount of natural light and thus improves the aesthetics of the rooms.

The slim lines of Cor Vision Plus are not only characterized by an excellent design, but together with the glazing used, they reduce the U-Factor to even 0.16

Cor Vision Plus allows you to hide the frames around the perimeter. Only the 1" wide center post remains visible. Glass packages up to 54mm wide maximize the acoustic and thermal properties of the solution. The maximum single dimension is as much as 13' 1" per sash, and the permissible sash weight is 1543 lbs (881 lbs when opening manually).

* depends on the configuration - consult with a technologist

TECHNICAL DATA	Cor Vision Plus
Building depth	7 1/16" / 3-track - 10 15/16"
Filling thickness	1" - 1 3/16"
MAXIMUM DIMENSIONS AND WEIGHT OF THE CONSTRUCTION	
Max dimensions of the window sash (H x L)	H up to 13' 1"*** L up to 13' 1"***
Max weight of the sash (door window)	881 lbs (manual), 1543lbs (automated)



REYNAERS SYSTEMS

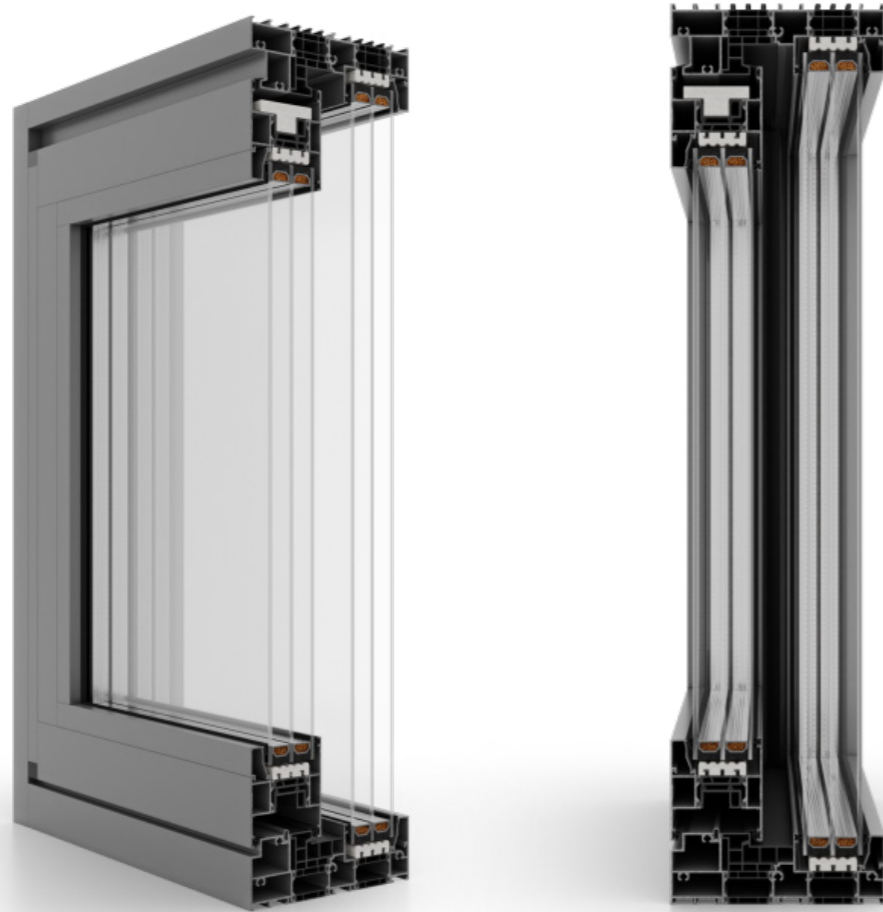


MASTERPATIO	84
MASTERLINE 8	86
MASTERLINE 8 PIVOT	88
SLIM LINE 38	92



MASTERPATIO

LIFT AND SLIDE DOOR SYSTEM



MASTERPATIO

MasterPatio is a cutting-edge solution designed to maximize glazing in sliding and tilt door systems. In this system, profiles are nearly invisible, comprising only about 10% of the opening's lumen. The visibility of plastic elements and gaskets has been minimized, as they are cleverly concealed within the profiles. Importantly, the system achieves a U-Factor suitable for passive buildings, reaching up to 0.16.

MasterPatio is capable of spanning entire walls, allowing for the creation of almost full façades using this system. It supports a maximum element height of 11' 5", and the sliding and tilting sash can weigh up to 1102 lbs. The system accommodates glazed door packages up to 2 7/16" wide.

This solution is fully compatible with the MasterLine 8 window and door system, significantly expanding design options. Depending on the variant, it's possible to incorporate a low threshold or a threshold that is flush with the floor, enhancing both aesthetic appeal and accessibility.

TECHNICAL DATA	MasterPatio
Frame depth (window)	7 1/16"
Sash depth (window)	3 1/16"
Glazing thickness (fixed window / opening windows)	up to 2 7/16"
MAXIMUM DIMENSIONS AND WEIGHT OF THE CONSTRUCTION	
Maximum dimensions of the window TT	H up to 11' 5" L up to 9' 2"
Max weight of the sash (window)	1102 lbs

MASTERLINE 8

WINDOW SYSTEM



MASTERLINE 8

The system strikes a balance between excellent performance, functionality, and a diverse range of solutions, making it perfectly suited for the production of windows, doors, and balcony doors. Masterline 8 Functional features three levels of insulation, catering to various energy requirements. This versatility makes it suitable for buildings with low energy needs, energy-efficient constructions, and even passive buildings, offering options for every user.

The system introduces new possibilities for opening sashes in various dimensions, including single or double-sash balcony doors with a low threshold, broadening its applicability. A key focus in its design is on maximizing daylight utilization while upholding the highest standards of thermal insulation, ensuring both energy efficiency and aesthetic appeal.

TECHNICAL DATA	Masterline 8
Frame depth (window)	3 1/16"
Sash depth (window)	3 7/16"
Glazing thickness (fixed window / opening windows)	up to 2 7/16"
MIN. VISIBLE WIDTH OF SECTIONS	
Frame (window)	2 1/16"
Sash (window)	13/16" (invisible)
MAXIMUM DIMENSIONS AND WEIGHT OF THE CONSTRUCTION	
Maximum dimensions of the TT	H up to 9' 2" L up to 3' 11"
Max weight of the sash (window)	440 lbs

MASTERLINE 8 PIVOT

DOOR SYSTEM



MASTERLINE 8 PIVOT

This system allows for the creation of distinctive revolving door structures, offering a contemporary and intriguing alternative to traditional sliding or folding patio doors. The revolving door system stands out for its excellent thermal insulation and tightness, ensuring both comfort and energy efficiency.

Like other doors in our range, these revolving doors can be conveniently enhanced with automatic opening and closing mechanisms, which can be operated via a code or finger scan, adding a layer of modern convenience and security. Additionally, they are available with anti-burglary protection, providing added peace of mind.

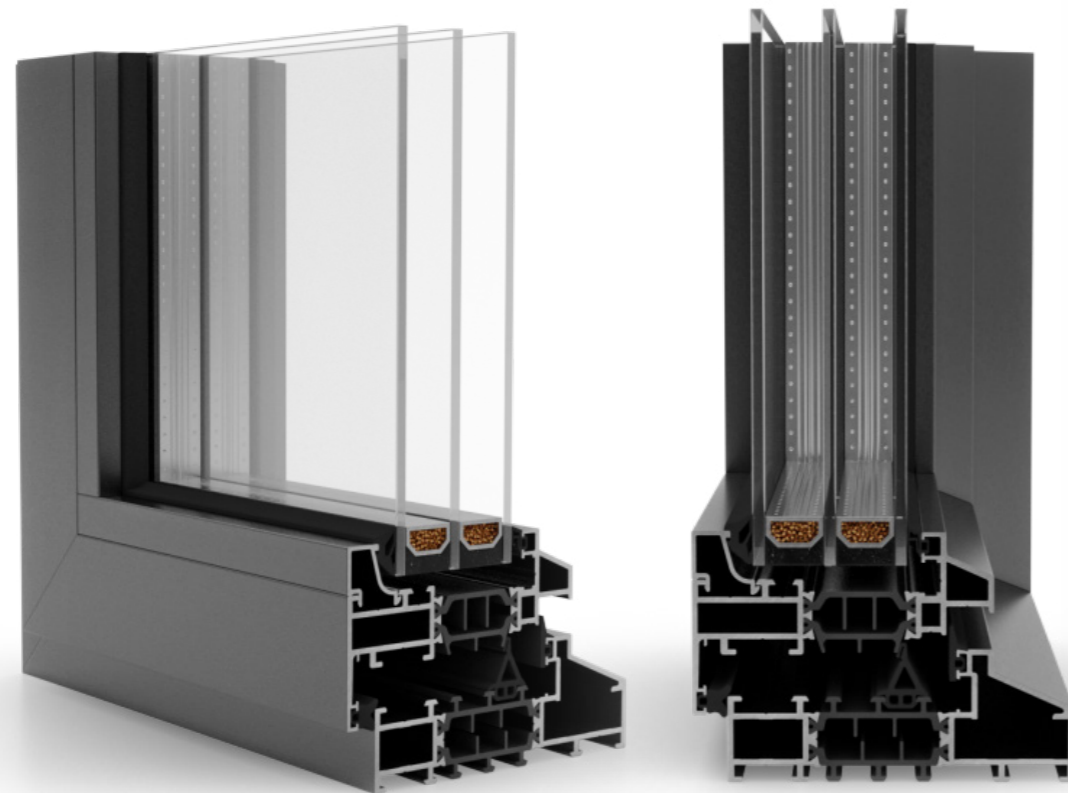
The Masterline 8 Pivot system offers two opening schemes for the revolving doors, catering to different spatial and design needs. These doors can be configured to open either inwards or outwards, allowing for flexibility in various architectural contexts.

TECHNICAL DATA	Masterline 8 Pivot
Frame depth (window)	3 1/16"
Sash depth (window)	3 1/16"
Glazing thickness	up to 2 7/16"
MAX WYMIARY I CIĘŻARY KONSTRUKCJI	
Maximum dimensions of the door	H up to 9' 10" L up to 5' 6"
Max weight of the sash (door)	440 lbs

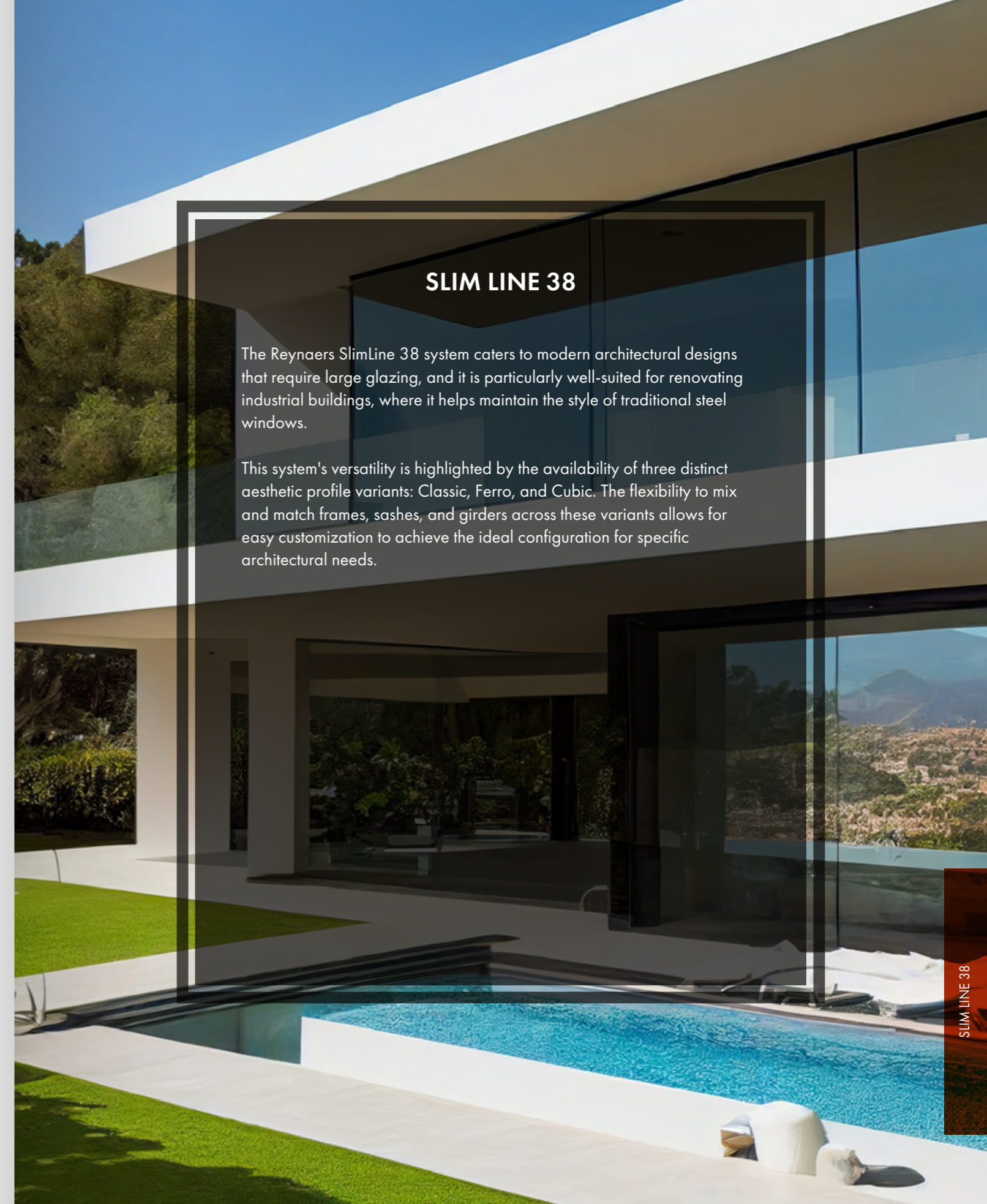


SLIM LINE 38

WINDOW SYSTEM



TECHNICAL DATA	SLIM LINE 38
Frame depth (window)	3" -3 7/8"
Sash depth (window)	3 3/8"
Glazing thickness (fixed window / opening windows)	up to 2 3/16"
MAXIMUM DIMENSIONS AND WEIGHT OF THE CONSTRUCTION	
Maximum dimensions of the window TT	H to 3' 11" L to 9' 2"
Max weight of the sash (window)	374lbs



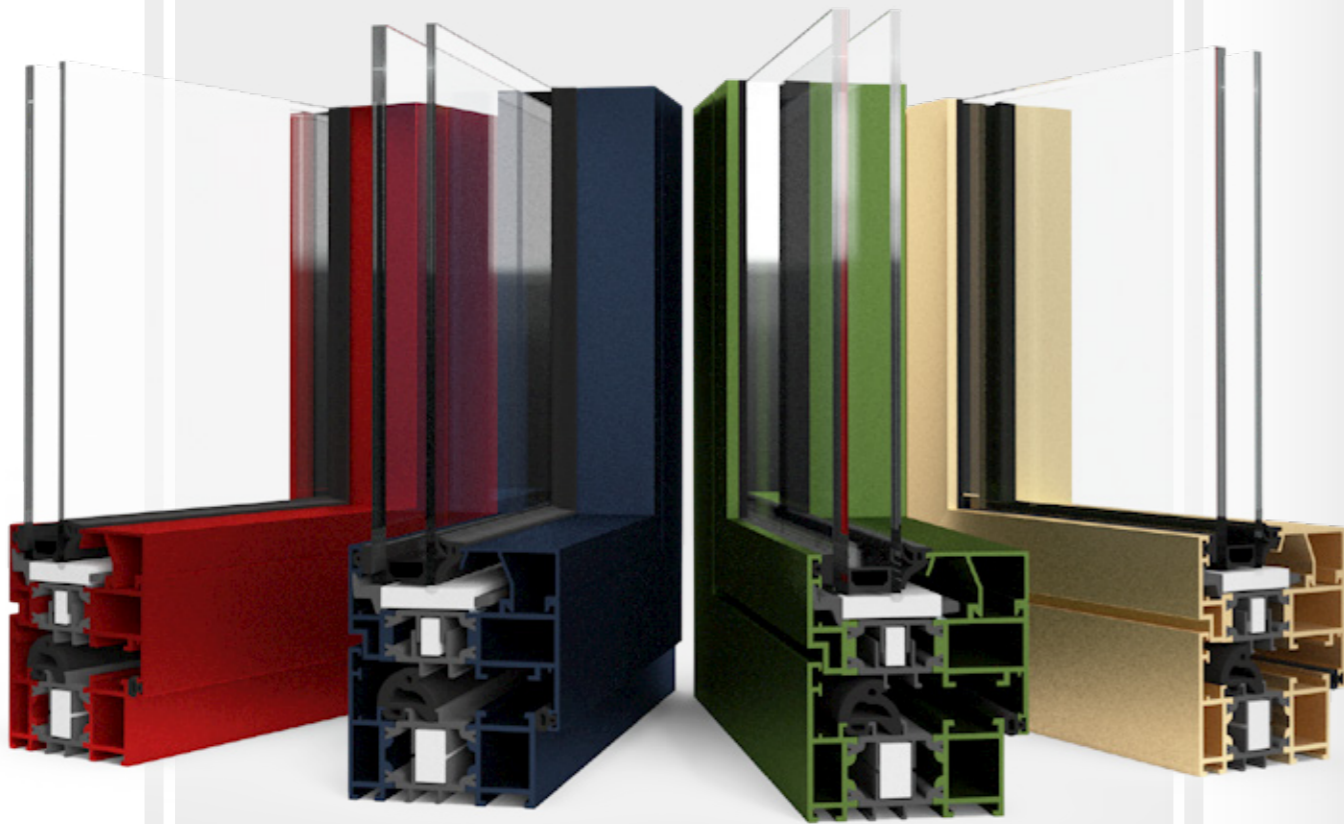
SLIM LINE 38

The Reynaers SlimLine 38 system caters to modern architectural designs that require large glazing, and it is particularly well-suited for renovating industrial buildings, where it helps maintain the style of traditional steel windows.

This system's versatility is highlighted by the availability of three distinct aesthetic profile variants: Classic, Ferro, and Cubic. The flexibility to mix and match frames, sashes, and girders across these variants allows for easy customization to achieve the ideal configuration for specific architectural needs.

colors

Aluminium profiles create unlimited possibilities. To achieve the desired Color effect, the windows can be varnished using RAL K7 palette colors or wood-like coatings.





Despiro

DESPIRO

DESPIRO EXCLUSIVE DOORS

1

Aesthetic decorative panels available in a wide range of designs and RAL colors as well as wood-like veneers.

2

Available with or without a threshold.

3

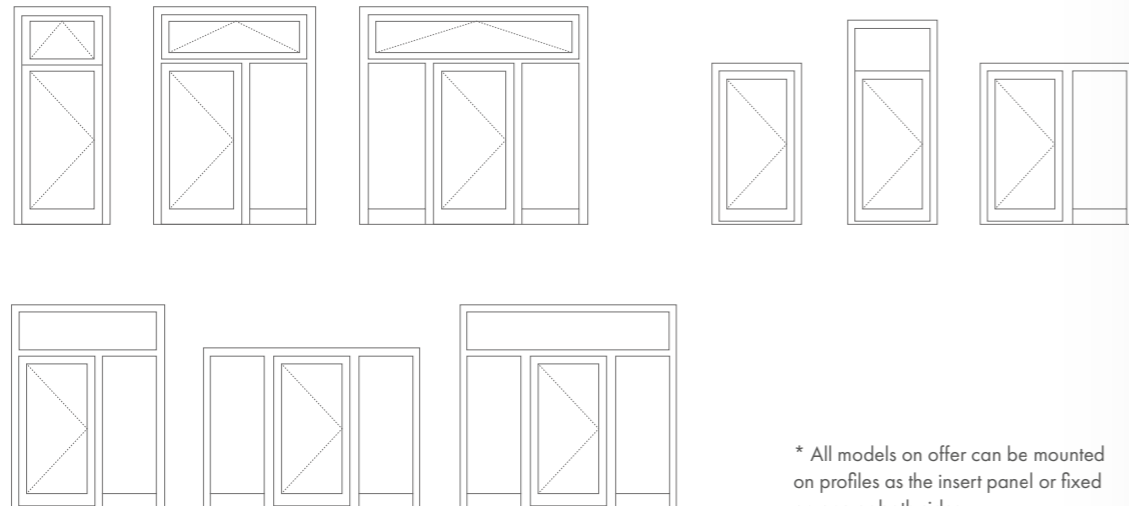
Seals that ensure high water and air tightness thereby provide the users with the comfort and savings.

4

Four structure variants: ST, SI, SI+ and AERO that enable to achieve very good thermal parameters.

5

Rigid and durable aluminium profiles that enable to produce doors of large sizes.



* All models on offer can be mounted on profiles as the insert panel or fixed on one or both sides.

ALUMINUM DOORS DESPIRO

The Despiro doors collection combines modernity in technology and aesthetics, making it an appealing choice for discerning customers who value both beauty and durability in a single joinery product.

Aesthetically, these doors are characterized by their innovative design where the door leaves are concealed behind decorative panels. This design employs special profiles covered with aluminium panels to create a unified surface effect. The doors are crafted to maintain this effect on both the interior and exterior, ensuring visual consistency. Additionally, concealed hinges contribute to a cohesive and harmonious appearance, enhancing the doors' overall aesthetic appeal.

In terms of tightness and insulation, the MB-86 system forms the backbone of these doors. This allows for the provision of light, rigid, and durable aluminium profiles available in four structural versions (ST, SI, SI+ and AERO) and three types of bottom sealing. The doors excel in water and air tightness, as well as outstanding thermal and acoustic insulation, significantly enhancing indoor comfort and efficiency, and potentially reducing the costs of usage.



○ DP 01

- Pull DP 60.1600,
- Front glass: VSG 33.1 thermofloat,
- Glazing (center) sandblasted float with translucent stripes,
- Rear glass: thermofloat with a black warm edge spacer,
- Alu-Inox application put on both sides,
- RAL 9016 white gloss,

○ DP 02

- Pull DP 60.1800,
- Front glass: VSG 33.1 thermofloat,
- Glazing (center) sandblasted float with translucent stripes,
- Rear glass: thermofloat with a black warm edge spacer,
- Flush Alu-Inox inlay on both sides,
- RAL 7016 grey anthracite matt,

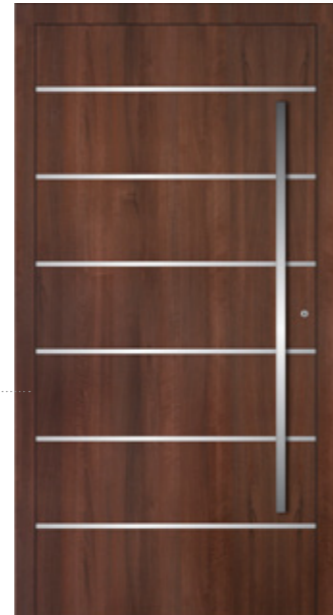


○ DP 03

- Pull DP 60.1000,
- Front glass: VSG 33.1 thermofloat,
- Glazing (center) sandblasted float,
- Rear glass: thermofloat with a black warm edge spacer,
- Alu-Inox application put on both sides,
- RAL 7016 grey anthracite matt,

○ DP 04

- Pull DP 60.1400,
- Flush Alu-Inox inlay on both sides,
- Mahogany/a surcharge for wood-like colors,



○ DP 05

- Pull DP 60.1600,
- Milling on both sides,
- RAL 7016 grey anthracite matt,

○ DP 06

- Pull DP 60.1000,
- Front glass: VSG 33.1 thermofloat,
- Glazing (center) sandblasted float with translucent stripes,
- Rear glass: thermofloat with a black warm edge spacer,
- Milling on both sides,
- RAL 7001 matt,



○ DP 07

- Pull DP 40.1400,
- Front glass: VSG 33.1 thermofloat,
- Glazing (center) sandblasted glass with a translucent frame,
- Rear glass: thermofloat with a black warm edge spacer,
- Milling on both sides,
- RAL 3004 maroon matt,

○ DP 08

- Pull DP 60.800,
- Front glass: VSG 33.1 thermofloat,
- Glazing (center) sandblasted glass with a translucent frame,
- Rear glass: thermofloat with a black warm edge spacer,
- RAL 9016 white gloss,





DP 09

- Pull DP 60.1600
- Front glass: VSG 33.1 thermofloat
- Glazing (center) sandblasted glass with a translucent frame
- Rear glass: thermofloat with a black warm edge spacer
- Flush Alu-Inox inlay on both sides
- RAL 7016 grey anthracite matt/
WENGE for wood-like colors

DP 10

- Pull DP 60.1800,
- RAL 9006 aluminium silver matt,



DP 11

- Pull DP 60.1800,
- Front glass: VSG 33.1 thermofloat,
- Glazing (center) sandblasted float with translucent stripes,
- Rear glass: thermofloat with a black warm edge spacer,
- Alu-Inox application put on both sides,
- RAL 9007 grey matt,

DP 12

- Pull DP 50.1200
- Front glass: VSG 33.1 thermofloat
- Glazing (center) sandblasted glass with a translucent frame
- Rear glass: thermofloat with a black warm edge spacer
- RAL 3004 maroon matt/RAL 9007 grey matt



DP 13

- Pull DP 200.1600,
- Front glass: VSG 33.1 thermofloat,
- Glazing (center) sandblasted glass,
- Rear glass: thermofloat with a black warm edge spacer,
- Alu-Inox application put on both sides,
- RAL 7016 grey anthracite matt,

DP 14

- Pull DP 60.1600,
- Front glass: VSG 33.1 thermofloat,
- Glazing (center) sandblasted float with translucent stripes and a black frame,
- Rear glass: thermofloat with a black warm edge spacer,
- Milling on both sides,
- RAL 9016 white gloss,



DP 15

- Pull DP 60.1200,
- Front glass: VSG 33.1 thermofloat,
- Glazing (center) sandblasted float,
- Rear glass: thermofloat with a black warm edge spacer,
- Alu-Inox application put on both sides,
- RAL 7016 grey anthracite matt,

DP 16

- Pull DP 60.1600,
- Front glass: VSG 33.1 thermofloat,
- Glazing (center) sandblasted float,
- Rear glass: thermofloat with a black warm edge spacer,
- Milling on both sides,
- RAL 7016 grey anthracite matt,





○ DP 17

- Pull DP 50.1200,
- Front glass: VSG 33.1 thermofloat,
- Glazing (center) sandblasted float with translucent stripes,
- Rear glass: thermofloat with a black warm edge spacer,
- Milling on both sides,
- RAL 9016 white gloss,

○ DP 18

- Pull DP 60.800,
- Front glass: VSG 33.1 thermofloat,
- Glazing (center) sandblasted float with translucent stripes,
- Rear glass: thermofloat with a black warm edge spacer,
- External milling,
- Flush Alu-Inox inlay on both sides,
- RAL 7001 matt,



○ DP 19

- Pull DP 60.800,
- Front glass: VSG 33.1 thermofloat,
- Glazing (center) sandblasted float with translucent stripes,
- Rear glass: thermofloat with a black warm edge spacer,
- RAL 9016 white gloss,

○ DP 20

- Pull DP 60.1800,
- Front glass: VSG 33.1 thermofloat,
- Glazing (center) sandblasted float with translucent stripes and a decorative frame,
- Rear glass: thermofloat with a black warm edge spacer,
- Alu-Inox inlay applied outside into the panel/flush,
- Decorative frame made of aluminum profile 13/16"x 2 3/8" placed on the front, in the color of a panel,
- RAL 7016 grey anthracite matt,



○ DP 21

- Pull DP 60.1800,
- Alu-Inox application put on both sides,
- RAL 7016 grey anthracite matt,

○ DP 22

- Pull DP 60.1800,
- Alu-Inox application put on both sides,
- RAL 7016 grey anthracite matt,

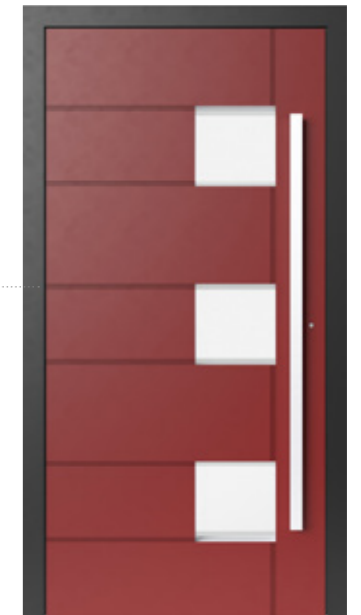


○ DP 23

- Pull DP 60.1800,
- Alu-Inox application put on both sides,
- RAL 9016 white gloss,

○ DP 24

- Pull DP 60.1400,
- Front glass: VSG 33.1 thermofloat,
- Glazing (center) sandblasted float with transparent stripes,
- Rear glass: thermofloat with a black warm spacer bar,
- Milling on both sides,
- RAL3004/RAL9005,





DP 25

- Pull DP 60.1400,
- Front glass: VSG 33.1 thermofloat,
- Glazing (center) sandblasted float with transparent stripes,
- Rear glass: thermofloat with a black warm spacer bar,
- INOX application,
- RAL5005,

DP 26

- Pull DP 40.1200,
- Front glass: VSG 33.1 thermofloat,
- Glazing (center) sandblasted float with transparent stripes,
- Rear glass: thermofloat with a black warm spacer bar,
- Milling on both sides,
- RAL7040,



DP 27

- Pull DP 30.1200,
- Front glass: VSG 33.1 thermofloat,
- Glazing (center) sandblasted float,
- Rear glass: thermofloat with a black warm spacer bar,
- Milling on both sides,
- RAL9005,

DP 28

- Pull DP 60.1400,
- Front glass: VSG 33.1 thermofloat,
- Glazing (center) sandblasted float with transparent stripes,
- Rear glass: thermofloat with a black warm spacer bar,
- Milling on both sides,
- RAL1023/RAL9005,



DP 29

- Pull DP 70.1400,
- Front glass: VSG 33.1 thermofloat,
- Glazing (center) sandblasted float,
- Rear glass: thermofloat with a black warm spacer bar,
- INOX application,
- RAL9005,

DP 30

- Pull DP 70.1200,
- Front glass: VSG 33.1 thermofloat,
- Glazing (center) sandblasted float,
- Rear glass: thermofloat with a black warm spacer bar,
- INOX application,
- RAL7040,



DP 31

- Pull DP 60.1600,
- Front glass: VSG 33.1 thermofloat,
- Glazing (center) sandblasted float,
- Rear glass: thermofloat with a black warm spacer bar,
- INOX application,
- RAL6012,

DP 32

- Pull DP 60.1800,
- Front glass: VSG 33.1 thermofloat,
- Glazing (center) sandblasted float,
- Rear glass: thermofloat with a black warm spacer bar,
- INOX application,
- RAL9001,





DP 33

- Pull DP 60.1400,
- Front glass: VSG 33.1 thermofloat,
- Glazing (center) sandblasted float,
- Rear glass: thermofloat with a black warm spacer bar,
- INOX application,
- RAL3004,

DP 34

- Pull DP 60.1600,
- Front glass: VSG 33.1 thermofloat,
- Glazing (center) sandblasted float or mirror,
- Rear glass: thermofloat with a black warm spacer bar,
- Smooth panel,
- RAL9001,



DP 35

- Pull DP 60.1600,
- Milling on both sides,
- RAL3004,

DP 36

- Pull DP 30.1400,
- Front glass: VSG 33.1 thermofloat,
- Glazing (center) sandblasted float,
- Rear glass: thermofloat with a black warm spacer bar,
- RAL7040,



DP 37

- Pull DP 60.1200,
- Front glass: VSG 33.1 thermofloat,
- Glazing (center) sandblasted float,
- Rear glass: thermofloat with a black warm spacer bar,
- INOX application,
- RAL7016,

DP 38

- Pull DP 60.1400,
- Front glass: VSG 33.1 thermofloat,
- Glazing (center) sandblasted float,
- Rear glass: thermofloat with a black warm spacer bar,
- INOX application,
- RAL1019,





series DP 30

(cantilevers cut at the angle of 45 degrees), stainless, matt or polished steel

Available dimensions:

- DP 30.600 - 1 3/16" x 1' 11"
- DP 30.800 - 1 3/16" x 2' 7"
- DP 30.1000 - 1 3/16" x 3' 3"
- DP 30.1200 - 1 3/16" x 3' 11"
- DP 30.1400 - 1 3/16" x 4' 7"
- DP 30.1600 - 1 3/16" x 5' 3"
- DP 30.1800 - 1 3/16" x 5' 10"

series DP 40

(flat-finished cantilevers), stainless, matt or polished steel

Available dimensions:

- DP 40.600 - 1 3/16" x 1' 11"
- DP 40.800 - 1 3/16" x 2' 7"
- DP 40.1000 - 1 3/16" x 3' 3"
- DP 40.1200 - 1 3/16" x 3' 11"
- DP 40.1400 - 1 3/16" x 4' 7"
- DP 40.1600 - 1 3/16" x 5' 3"
- DP 40.1800 - 1 3/16" x 5' 10"



series DP 60

(flat-finished cantilevers), stainless, matt or polished steel

Available dimensions:

- DP 60.600 - 1 9/16"x13/16"x5' 10"
- DP 60.800 - 1 9/16"x13/16"x2' 7"
- DP 60.1000 - 1 9/16"x13/16"x3' 3"
- DP 60.1200 - 1 9/16"x13/16"x3' 11"
- DP 60.1400 - 1 9/16"x1 9/16"x4' 7"
- DP 60.1600 - 1 9/16"x1 9/16"x5' 3"
- DP 60.1800 - 1 9/16"x1 9/16"x5' 10"

series DP 70

(cantilevers cut at the angle of 45 degrees), stainless, matt or polished steel

Available dimensions:

- DP 70.600 - 1 9/16"x13/16"x5' 10"
- DP 70.800 - 1 9/16"x13/16"x2' 7"
- DP 70.1000 - 1 9/16"x13/16"x3' 3"
- DP 70.1200 - 1 9/16"x13/16"x3' 11"
- DP 70.1400 - 1 9/16"x1 9/16"x4' 7"
- DP 70.1600 - 1 9/16"x1 9/16"x5' 3"
- DP 70.1800 - 1 9/16"x1 9/16"x5' 10"

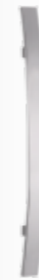


series DP 80

(cantilevers at the endings of the pull), stainless, matt or polished steel

Available dimensions:

- DP 80.600 - 1' 11"



series DP 90

(forward-curved pulls), stainless, matt or polished steel

Available dimensions:

- DP 90.600 - 1' 11"



series DP 210

(cantilevers cut at the angle of 45 degrees) stainless/Jatobe, matt or polished steel

Available dimensions:

- DP 210.800 - 2' 7"
- DP 210.1200 - 3' 11"
- DP 210.1600 - 5' 2"

series DP 110

(cantilevers cut at the angle of 45 degrees), stainless, matt or polished steel

Available dimensions:

- DP 110.600 - 1' 11"
- DP 110.800 - 2' 7"
- DP 110.1000 - 3' 3"
- DP 110.1200 - 3' 11"
- DP 110.1400 - 4' 7"
- DP 110.1600 - 5' 2"
- DP 110.1800 - 5' 10"



series DP 200

(flat-finished cantilevers), stainless/Jatobe, matt or polished steel

Available dimensions:

- DP 200.800 - 2' 7"
- DP 200.1200 - 3' 11"
- DP 200.1600 - 5' 2"



In our selection, you will find an extensive variety of glass options, including glass with motifs, translucent glass, and ornamental glass in the most popular designs. (Note: This does not apply to models DP20 to DP36.)

Optional ornaments:



Satinata

Master-Ligne

Chinchilla

Master-Carre

Master-Point

Our sidelights and toplights are composed of triple-glazed units with warm edge spacers. These sidelights (permanent glazing) can be installed either on one side or on both sides of a door structure, offering flexibility in design.

The maximum width of a sidelight: 4' 7"

All door models are available in variants with sidelights and toplights.

variant 1: Sandblasted glass (motifs)

variant 2: Translucent glass

variant 3: Ornamental glass

Our panelled doors are crafted for users with the highest demands. Thanks to innovative technical solutions and unique designs, we are able to create front entry doors that are not only functional and durable but also serve as a distinctive feature and decoration for many years.

Standard colors

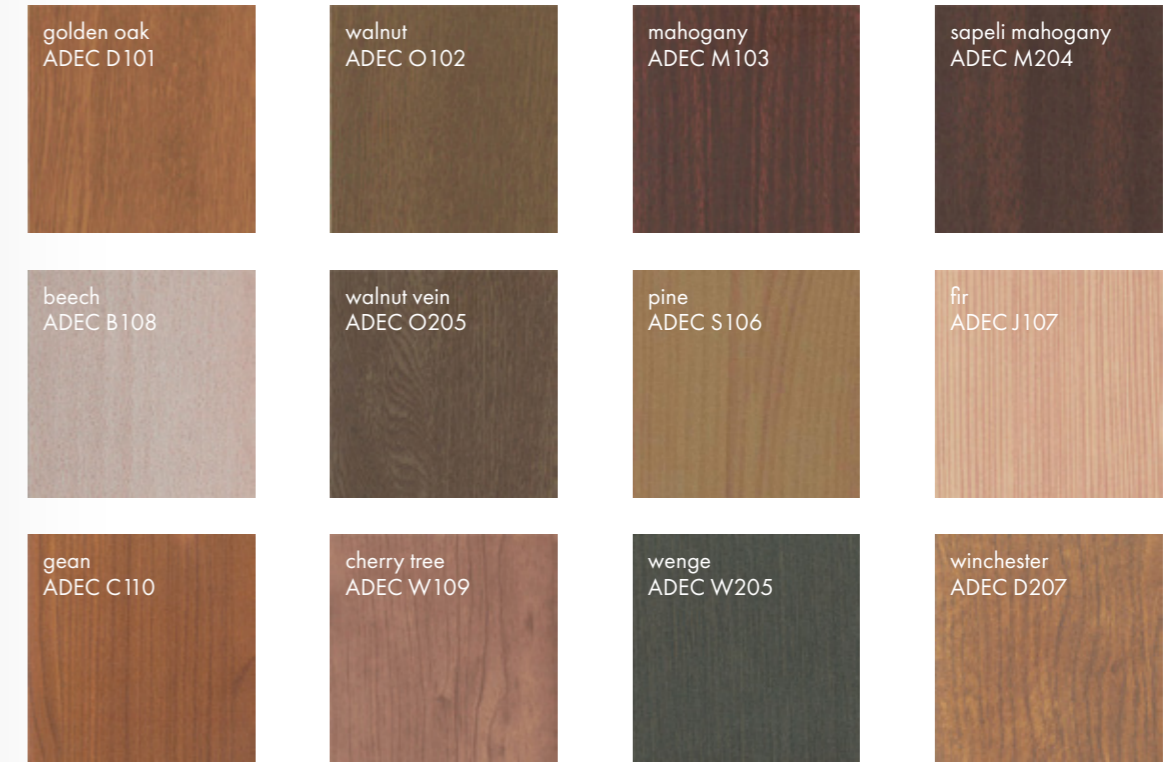
The color of the door is a key element in enhancing the facade's appearance and adding a personal touch to the overall look



* Optionally all RAL colors are available as subject to a surcharge.

** Models from DP20 to DP36 are only available in RAL colors.

Wood-like colors



* A surcharge for wood-like colors.

** colors shown in this leaflet may differ from the actual ones. ***

Models from DP20 to DP36 are only available in RAL colors.







1/2023



Dual Action Windows

info@dualactionwindows.com

321-765-3355

www.dualactionwindows.com